



PHOTO #1



PHOTO #2



ASSEMBLY OF YOUR SPORTS COOL-DRINKER

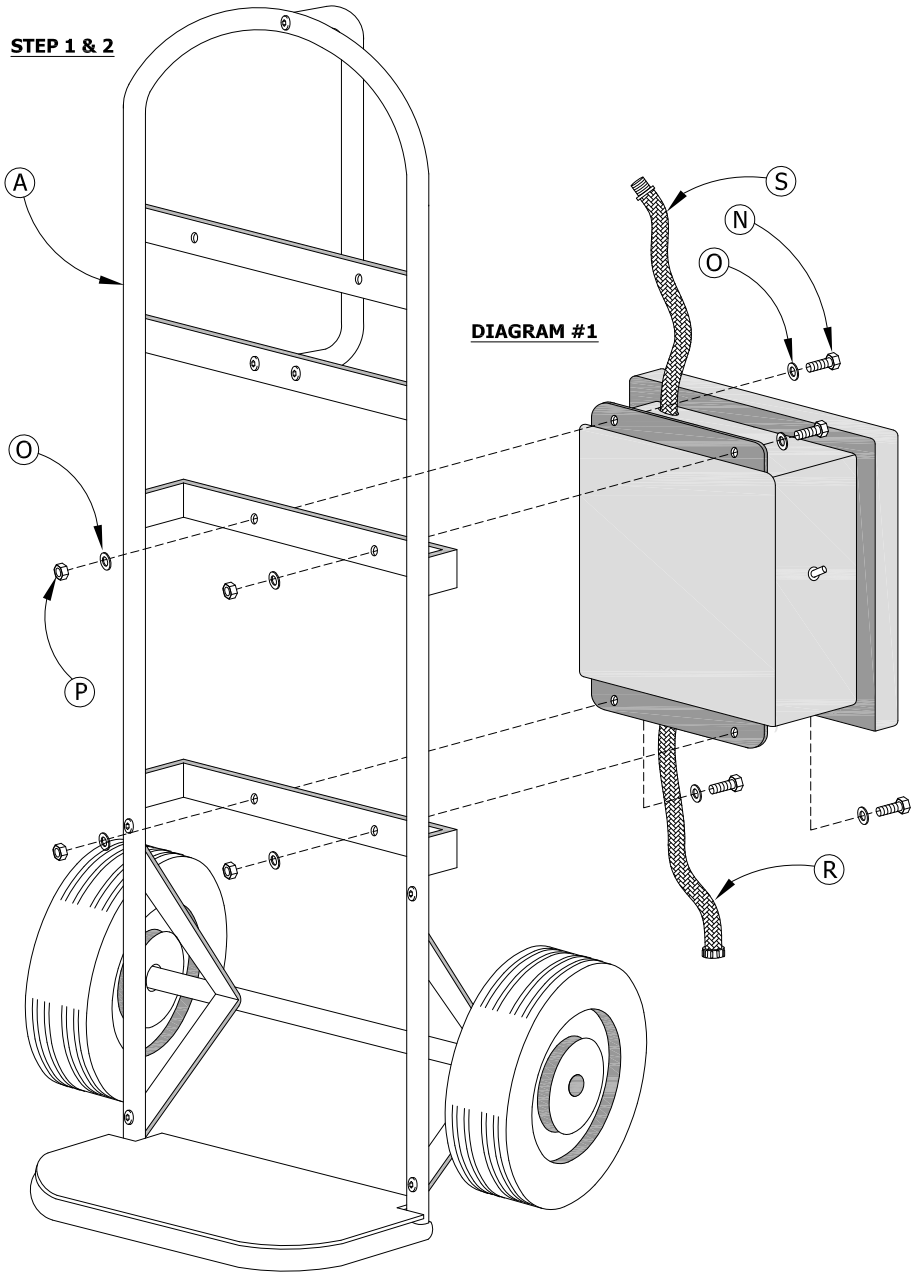
- STEP 1)** Unpack the Cart (*item A*) and assemble using specific instructions packaged with the cart.
- STEP 2)** Attach the Power Pack (*item B*) to the backside of the cart using bolts, washers and locknuts (*items N,O,P*) as shown in **Diagram #1**.
- STEP 3)** Now attach the Power Drinker Manifold (*item C*) to the Cart using the Tension Bands (*item G*) and bolts, washers and locknuts (*items N,O,P*) as shown in **Diagram #2**.
- STEP 4)** Connect the Upper Hose (*item S*) coming from the top of the Power Pack to the Manifold Hose (*item I*) coming from the bottom of the Manifold. See **Diagram #2**.
- STEP 5)** Connect the Lower Hose (*item R*) coming from the bottom of the Power Pack to the T-Fitting (*item H*) at the bottom of the Tank (*item D*) as shown in **Photo #1**.
- STEP 6)** Secure Water Tank to Cart using the Tie Down Strap (*item J*), locate as shown in **Photo #2**.
- STEP 7)** Pump Switch (*item Q*) must be in the OFF position. Open front cover to Power Pack and connect together the two black wires (1 male and 1 female) that are taped together. Unit is now ready for charging.

PARTS LIST

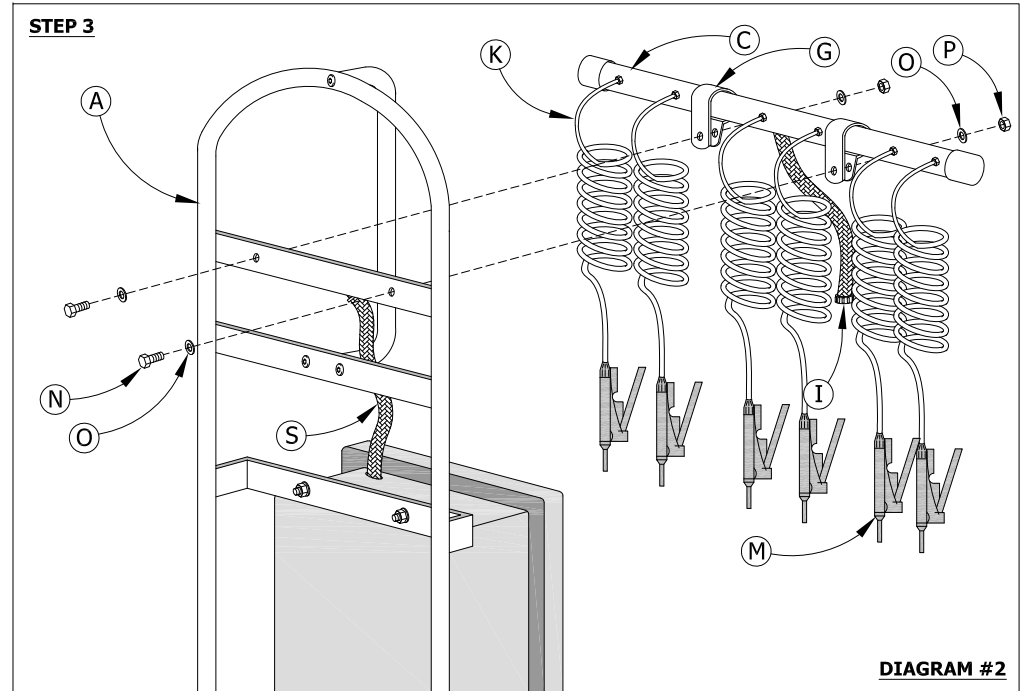
ITEM	DESCRIPTION	QTY	PART #
A	2 WHEEL HYDRATION CART	1 EA	ZDRINK2WHL
B	POWER PACK	1 EA	ZDPPACK
C	MANIFOLD	1 EA	ZSPCDMA
D	20 GALLON WATER TANK	1 EA	ZSPC20GTA
E	BATTERY 12V - 12AMP	1 EA	SPCBAT
F	BATTERY CHARGER 12V	1 EA	ZX3930034
G	TENSION BAND	2 EA	ZX0900098
H	T-FITTING	1 EA	ZX3920115
I	MANIFOLD HOSE	1 EA	ZX3920043
J	TIE DOWN STRAP	1 EA	ZX3900040
K	6' COIL HOSE	6 EA	ZX3920040
M	WATER WAND ASSEMBLY	6 EA	SPCWAND
N	HEX BOLT .25 X 1.0	6 EA	Z041250100
O	FLAT WASHER .25	12 EA	Z070025Z/P
P	LOCK NUT .25	6 EA	Z060250XXX
Q	TOGGLE SWITCH	1 EA	ZX3930001
R	LOWER HOSE .5	1 EA	ZX3920044
S	UPPER HOSE .375	1 EA	ZX3920043
T	PUMP	1 EA	ZX3920029
U	STRAINER	1 EA	ZX3920033
V	SANITIZING TABLETS	1 BOT	SPC1G
W	CHARGING HARNESS	1 EA	
X	FEMALE HOSE CONNECTOR .375	1 EA	ZX3920104
Y	MALE HOSE CONNECTOR .75	1 EA	ZX3920106
Z	FEMALE PIPE CONNECTOR .5	1 EA	ZX3920090
AA	FEMALE HOSE CONNECTOR .5	1 EA	ZX3920105
BB	.75 PVC NIPPLE	1 EA	ZX3920072
CC	.75 ADAPTER NIPPLE	2 EA	ZX3920112
DD	.75 CAP	1 EA	ZX3920108
EE	STRAIGHT ADAPTER .25 x .25	6 EA	ZX3920107
FF	STRAIGHT ADAPTER .25 x .375	1 EA	ZX3920110

} SPCHOSE

STEP 1 & 2



STEP 3





BATTERY CHARGING INSTRUCTIONS

- 1) Pump Switch (*item Q*) must be in the OFF position while charging.
- 2) Open Power Pack Door. **DOOR MUST REMAIN OPEN DURING CHARGING.** Connect Charger (*item F*) to Charging Harness (*item W*) then plug charger into standard outlet. Charge battery 24 hours before first use.
- 3) Do not allow battery to fully discharge. Discharging battery completely will shorten battery life.
- 4) Charge battery overnight (12 hrs +) after each use. A fully charged battery should last 4 hours if pump is not running continuously.
- 5) When storing the unit in the off - season, make sure to maintain battery charge and store in a cool setting. This will help to preserve battery life. See specific instructions that come with charger.

BATTERY HAS A 30 DAY WARRANTY ONLY. LIFE OF BATTERY IS DETERMINED BY CARE AND AMOUNT OF USE.

IMPORTANT
PRODUCT IS SHIPPED
DISCONNECTED.
CONNECT THE TWO
WIRES WRAPPED WITH
RUBBER BAND BEFORE 1ST USED.



CHARGING BATTERY

- OPEN POWER PACK DOOR
- CONNECT CHARGING HARNESS (**ITEM W**) TO CHARGER (**ITEM F**)
- PLUG CHARGER INTO STANDARD OUTLET

OPERATING INSTRUCTIONS

- 1) **Fill tank with drinkable clean WATER OR ICE ONLY. NO SPORTS DRINKS OR POWDERED DRINK MIXES OF ANY KIND.**
- 2) Turn Pump Switch (*item Q*) to the on position and you will hear the pump pressurize the water lines and then it will turn off until more pressure is needed.
- 3) You are now ready to drink from the water wands (*item M*). Add water or ice to tank as needed.
- 4) Turn OFF Pump Switch if tank runs out of water or it could damage pump. Turn OFF Pump Switch when moving the Team Drinker.



CLEANING AND STORING

CAUTION - DANGEROUS DISEASES CAN BE TRANSMITTED BY DRINKING CONTAMINATED WATER. CLEAN AND PROPERLY SANITIZE AND FLUSH SYSTEM AFTER EACH USE. FOLLOW INSTRUCTION ON SANITIZING TABLETS PROVIDED.

A strainer filter is installed at the pump intake valve to prolong the life of the components and for added health and safety of the user. This filter should be inspected and cleaned periodically during normal use and maintenance. A dirty filter can cause unit not to work. To remove the filter for inspection:

- 1) Remove clear strainer bowl, twisting counter clockwise. See Photo #3
- 2) Remove screen and clean. See Photo #4
- 3) Place screen back in filter and reassemble in reverse order.

***** Important: Do not run the unit without filter properly installed. Unit damage can occur and void warranty.*****

PHOTO #3

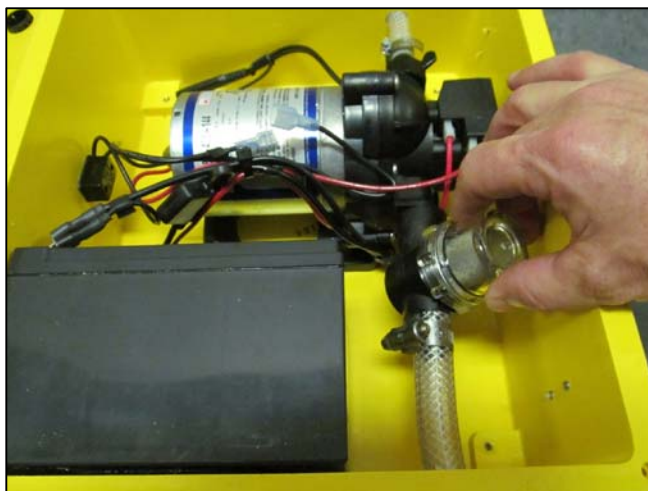


PHOTO #4



WINTERIZING

Charge your battery and store at room temperature. If the Sports Cool unit will be stored where it will be exposed to freezing temperatures, the unit must be winterized.

The "RV Antifreeze Method" of winterizing is the best way to prepare your unit for storage in freezing conditions. *****Important: Use only RV type antifreeze, sold specially for use in potable water systems, available at most hardware stores, for this purpose.*****

RV Antifreeze Method:

- 1) Drain tank thoroughly and wipe dry with a towel.
- 2) Insert the supply hose (the hose that goes into the tank) into a fresh gallon jug of **RV type antifreeze**.

*****Warning: Do not use Automotive Antifreeze to winterize this system. Such solutions are highly toxic. Ingestion may cause serious injury or death.*****

- 1) With the unit near a sink or floor drain, turn the unit on and open one of the valves. Keep open until the water has been flushed and antifreeze is coming out of the valve.
- 2) Repeat step 1 on each of the other six valves. This ensures that the antifreeze protects all lines, the pump and the filter.

PREPARING THE UNIT FOR USE AFTER STORAGE

- 1) If it has been stored dry, follow the sanitizing instructions.
- 2) If it has been stored with RV antifreeze, fill the tank with clean tap water and run the unit first, opening each valve until all antifreeze is eliminated and only clear water flows from each valve. Then follow the sanitizing instructions.



COMMON REPLACEMENT PARTS



TOGGLE SWITCH
PART # ZX3930001
ITEM - Q



STRAINER
PART # ZX3920033
ITEM - U



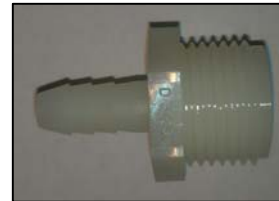
FEMALE PIPE CONNECTOR .5
PART # ZX3920090
ITEM - Z



FEMALE HOSE CONNECTOR .375
PART # ZX3920104
ITEM - X



FEMALE HOSE CONNECTOR .5
PART # ZX3920105
ITEM - AA



MALE HOSE CONNECTOR .75
PART # ZX3920106
ITEM - Y



STRAIGHT ADAPTER .25 x .25
PART # ZX3920107
ITEM - EE



CAP .75
PART # ZX3920108
ITEM - DD



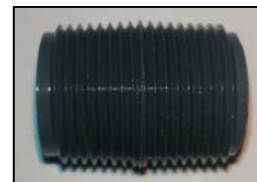
STRAIGHT ADAPTER .25 x .375
PART # ZX3920110
ITEM - FF



ADAPTER NIPPLE .75
PART # ZX3920112
ITEM - CC



T-FITTING
PART # ZX3920115
ITEM - H



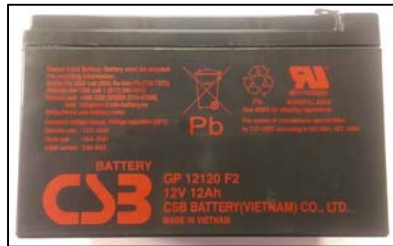
PVC NIPPLE .75
PART # ZX3920072
ITEM - BB



COMMON REPLACEMENT PARTS



POWER PACK
PART # ZDPPACK
ITEM - B



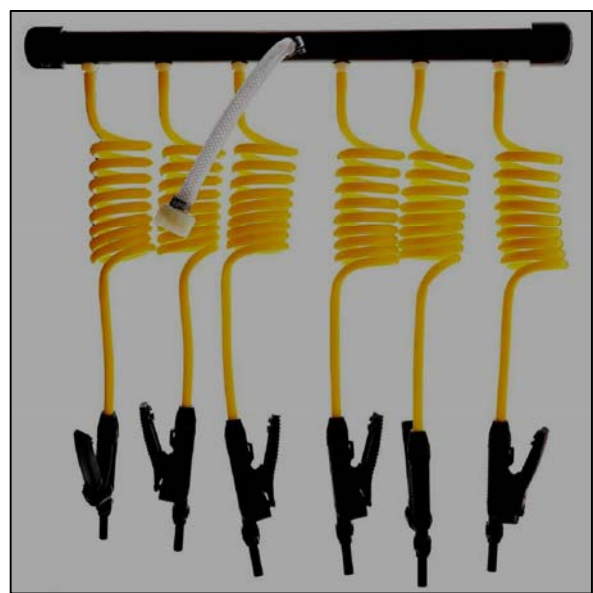
BATTERY
PART # SPCBAT
ITEM - E



WATER WAND ASSEMBLY
PART # SPCWAND
ITEM - M



PUMP
PART # ZX3920029
ITEM - T



MANIFOLD
PART # ZSPCDMA
ITEM - C



TROUBLE SHOOTING

- | | |
|---|---|
| Pump doesn't run when switch is turned on | <ul style="list-style-type: none"> ● Check battery connections. ● Is battery charged? ● Does the on/off switch feel weak? |
| Pump runs but system doesn't pressurize | <ul style="list-style-type: none"> ● Check for bad lower hose or loose connections on lower hose. ● Check for loose strainer bowl or clogged strainer. ● Check for kinks in hoses. |
| Fully charged battery doesn't last long | <ul style="list-style-type: none"> ● Have battery checked. ● Replace battery. |
| Battery will not charge | <ul style="list-style-type: none"> ● Check in-line fuse. ● Have charger checked. ● Replace charger. |

NOTICE

OPEN THE POWER PACK DOOR AND CONNECT THE TWO WIRES THAT ARE WRAPPED WITH A RUBBER BAND. THESE WIRES ARE DISCONNECTED AT THE FACTORY TO PREVENT DRAINAGE OF THE BATTERY AND TO PREVENT THE UNIT FROM BEING ACCIDENTALLY TURNED ON.

- **TURN OFF WHEN NOT IN USE**
- **DO NOT RUN PUMP DRY**
- **TURN OFF TO CHARGE BATTERY**

Z300TUOFF

ATTENTION:
 SERIOUS DISEASES CAN BE TRANSMITTED FROM CONTAMINATED WATER, THIS IS NOT A WATER PURIFICATION SYSTEM. SANITIZE AND FLUSH BEFORE EVERY USE. USE WATER ONLY FROM A SANITARY SOURCE. DO NOT USE "SPORTS DRINKS" OR POWDERS IN THIS SYSTEM. DRAIN UNIT AFTER EACH USE. IF THE UNIT IS TO BE STORED, SANITIZE, FLUSH AND DRAIN ALL WATER FROM THE UNIT AND REMOVE THE TOP CAP. CHECK WITH LOCAL HEALTH DEPARTMENT FOR ANY ADDITIONAL PREVENTATIVE MEASURES

ZX3000037

WARNING

FOR THE SAFETY OF THE USER AND THE CONTINUED SAFE PERFORMANCE FROM THIS EQUIPMENT, INSPECTION AND MAINTENANCE MUST BE PERFORMED REGULARLY. DO NOT USE THIS EQUIPMENT IF DAMAGE HAS OCCURRED.

CAUTION

POWER PACK DOOR MUST REMAIN OPEN FOR PROPER VENTILATION WHILE CHARGING BATTERY.

Z300DOORXX

These WARNING LABELS have been affixed to your product prior to shipment.

Our labels are laminated with an ultraviolet protective layer to protect from fading. However, after years of exposure, they may fade.

Should they become illegible or be removed, you may obtain free replacements by calling BSN Sports at 1-800-527-7510.

Please request labels by part number listed under each label above.