



**-- FNSB-65 --**  
**(20 FT SOCCER BACKSTOP SYSTEM)**  
**Installation Instructions**



Call Jaypro Sports Equipment at 1-800-243-0533  
during regular business hours for technical support.

[www.jaypro.com](http://www.jaypro.com)

**JAYPRO SPORTS**  
20 FT SOCCER BACKSTOP SYSTEM

P A R T S L I S T		
ITEM #	QTY	DESCRIPTION
1	4	FIELD NET POLE 24 FT OVERALL LENGTH
2	12	CORD LOOP ASSEMBLY
3	4	GROUND SLEEVE WELDMENT
4	4	OPTIONAL P/N: FN-20-C (GROUND SLEEVE COVER)
5	4	5/16 - #10 POLYESTER BLACK BRAIDED HOISTING ROPE x 45 FT
6	4	4" BLACK CAP
7	4	3/8"-16 x 5" LONG THREADED EYEBOLT
8	24	5/16" x 3 1/8" SNAP HOOK
9	10	1/4" WIRE ROPE CLIPS
10	4	1/4" WIRE ROPE THIMBLES
11	4	SWIVEL PULLEY
12	4	6" LONG GALV. STEEL CLEAT
13	4	3/8"-16 HEX HD LOCKNUT
14	8	1/4"-20 NYLON LOCK NUT
15	8	1/4"-20 x 5-1/2" HEX HD SCREW
16	12	3/8" FLAT WASHER
17	8	1/4" FLAT WASHER
18	2	D-RING
19	200	8" BLACK CABLE TIE
20	2	3/16" COATED AIRCRAFT CABLE x 75 FT
21	1	3 1/2" #36 KNOTLESS NYLON, BLACK 20' x 65' w/ 1/4" ROPE BORDER
22	4	4" ID BAND CLAMP, GALVANIZED
23	4	3/8" THIN NYLON LOCK NUT, ZP
24	4	3/8"-16 x 1 1/4" CARRIAGE BOLT, ZP

**IMPORTANT NOTICE:**

- 1) BEFORE EACH USE CHECK EQUIPMENT FOR PROPER CONNECTING HARDWARE AND STRUCTURAL INTEGRITY. REPLACE DAMAGED OR MISSING HARDWARE IMMEDIATELY.
- 2) USE OF THIS EQUIPMENT OTHER THAN INTENDED MAY BE HAZARDOUS.
- 3) ALTERATION OR MODIFICATION OF THIS EQUIPMENT MAY BE HAZARDOUS AND RESULT IN INJURY. FOR REPAIR OR REPLACEMENT, CONTACT YOUR DEALER OR JAYPRO SPORTS.
- 4) \* HARDWARE FOR IS FOR BOTH END POLES AND INTERMEDIATE POLES (*NOT ALL HARDWARE WILL BE USED*).

**TOOLS REQUIRED:**

- (1) 3/8" Socket Wrench and Box Wrench
- (1) 9/16" Socket Wrench and Box Wrench

- (1) 7/16" Nut Driver
- (1) Cable Cutters

**SPECIAL NOTES:**

- Nets should be removed and stored after the season is over.
- Remove and or lower and secure all netting if a major storm or extreme winds, in excess of 50 mph, are forecasted.

**Layout & Excavation:**

Clear working area from obstructions. Determine the proper location for the poles on the field. Spacing of poles is consistent, unless an obstruction is unmovable.

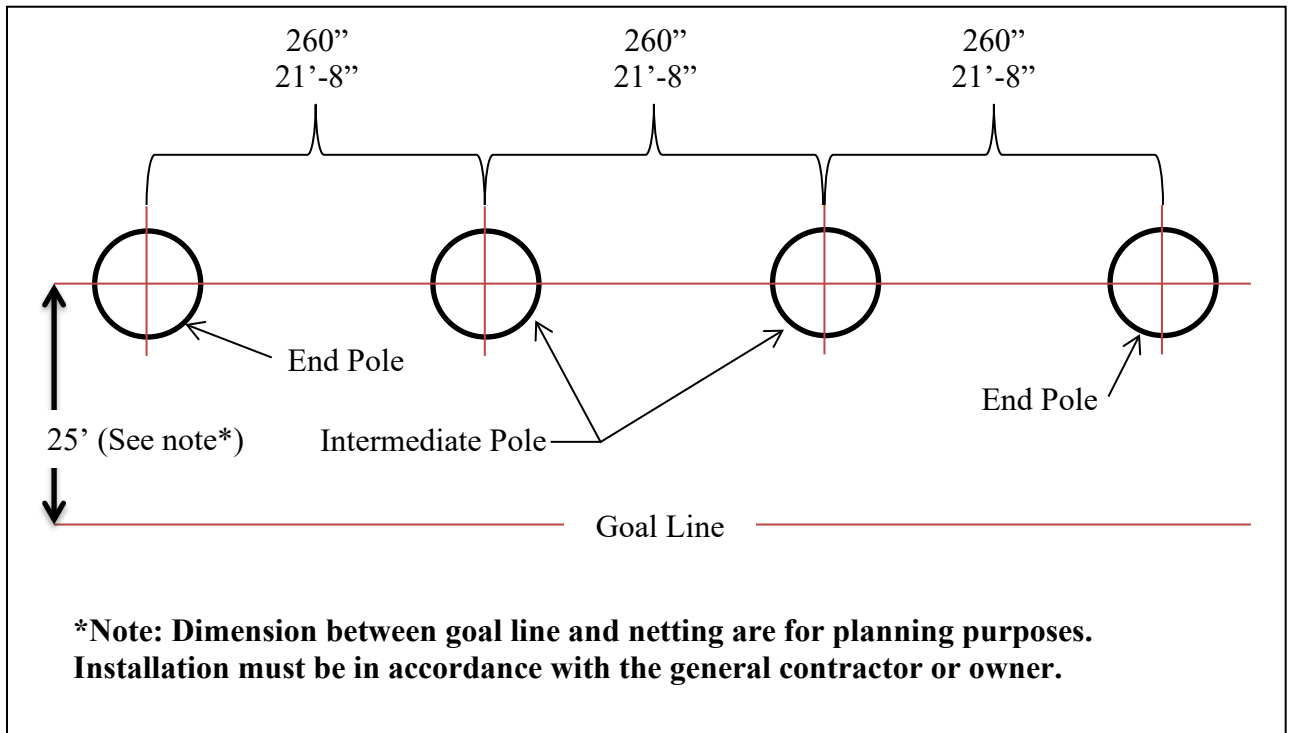
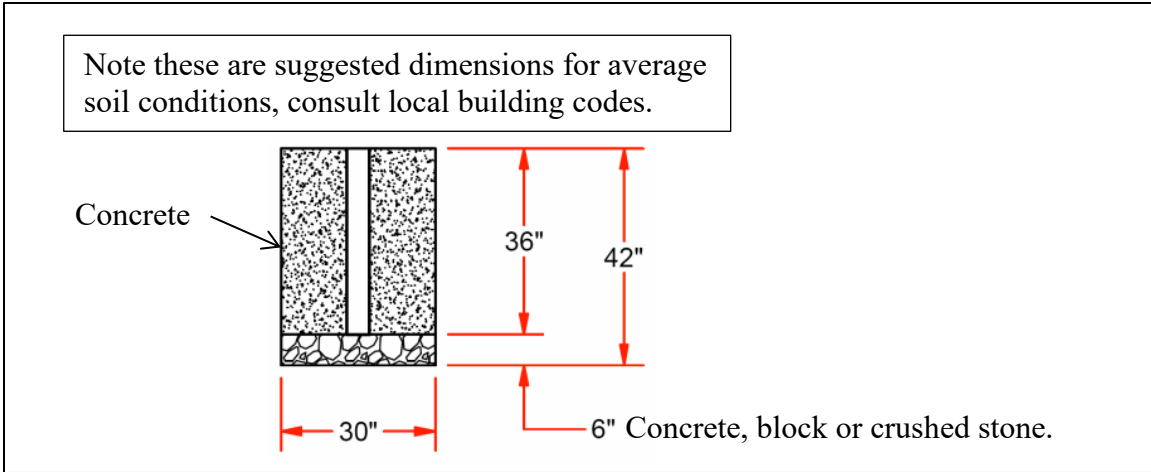


Figure 1

**Install Sleeves:**

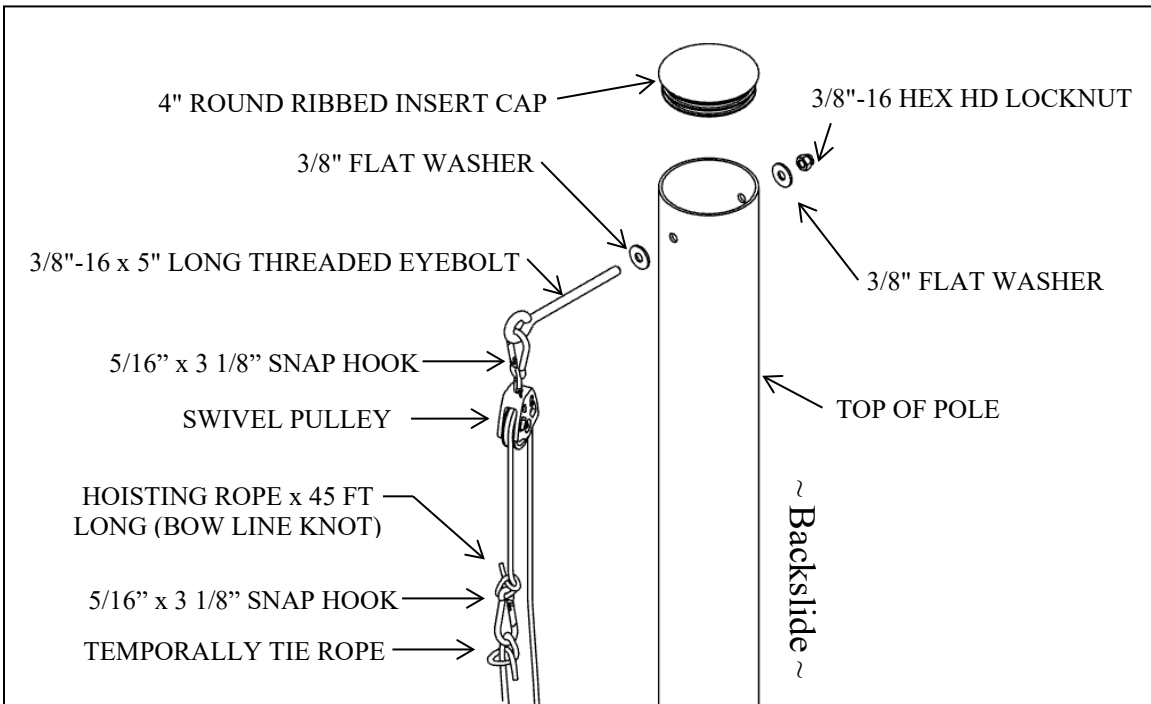
Dig footing holes and install the ground sleeves as shown in Figure 2. Pour 6" concrete footing and allow fully curing, or use two concrete blocks or crushed stone, to rest sleeve on. Wait 24 hours before inserting poles.



**Figure 2**

**Install Pole Hardware:**

Assemble 3/8" eyebolt hardware & 1/4" cleat hardware and pole cap onto the poles as shown in Figure 3 & Figure 4. Route the hoisting rope through the pulley. Attach the snap hook to the hoisting rope with a bowline knot. Temporarily attach the free end of the hoisting rope to the snap hook. See note on swivel pulley feature on page 6 of 8.



**Figure 3**

Slide the cord loops onto the poles and place them just above the cleat so they will be held in place while installing the poles.

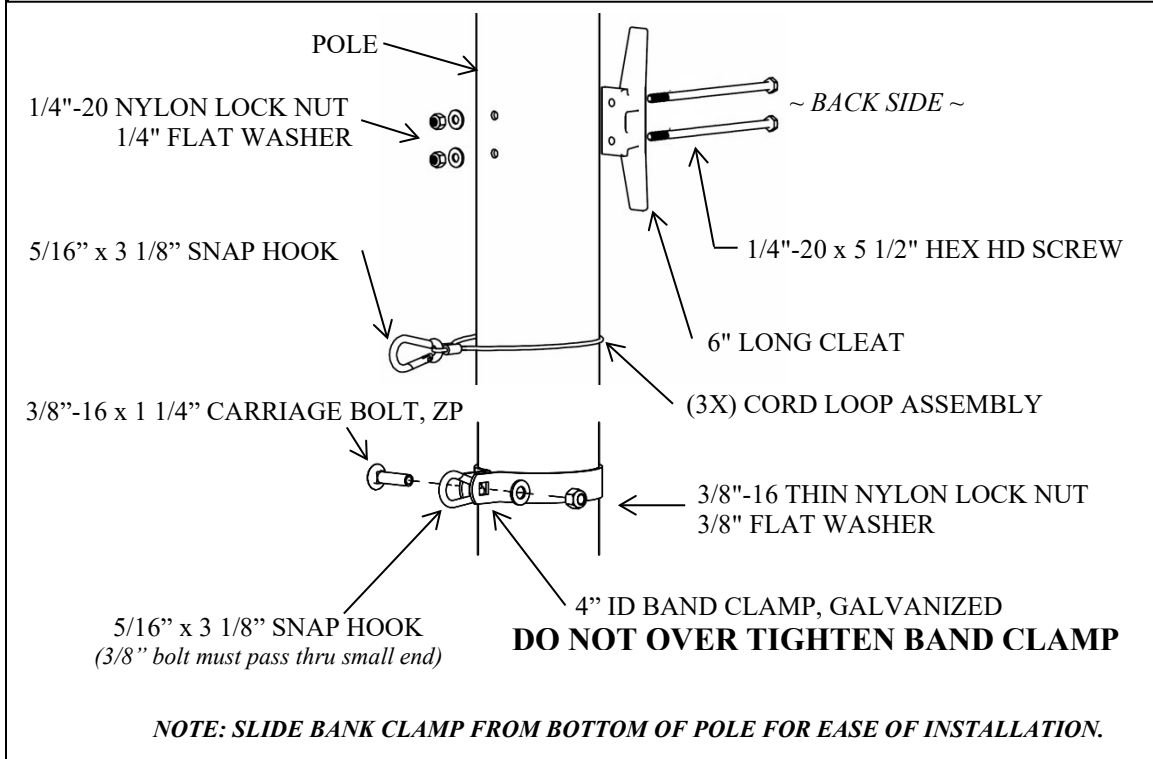


Figure 4

**Install Poles:**

Before inserting the poles into the sleeves, check to make sure:

1. The cleat installed opposite of pulley.
2. Run the hoisting rope thru pulley
  - a. Secure both ends together (loosely).
3. Note orientation (see Figure 5).

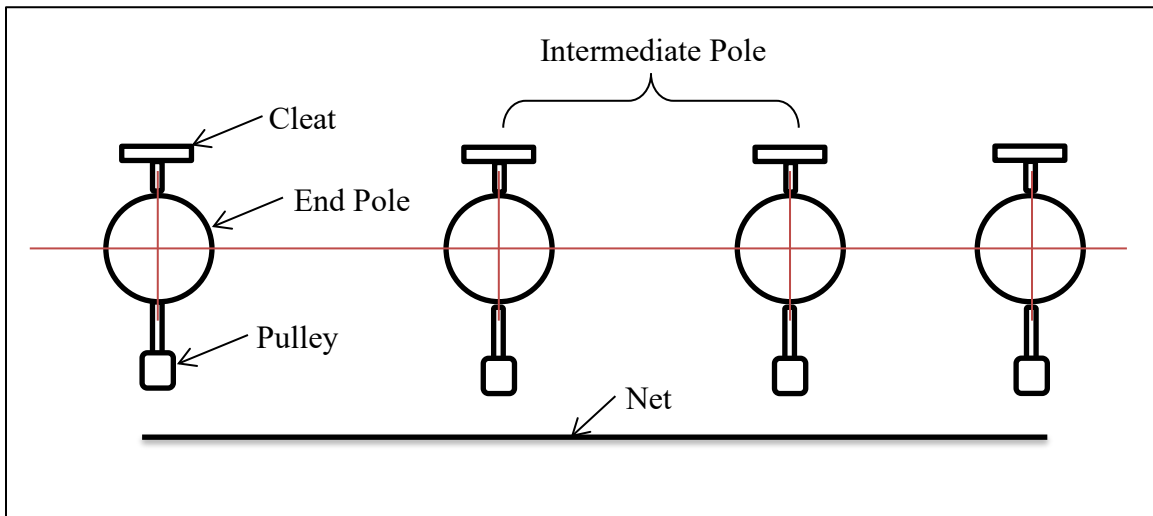


Figure 5

**Net:**

Lay the net out lengthwise and cut the 3/16" coated aircraft cable to length, extending each end enough to make up the loop. Make up a loop, as shown in Figure 6, on both ends of the cable. Attach a cable to both the top and bottom edges of the net using the cable ties.

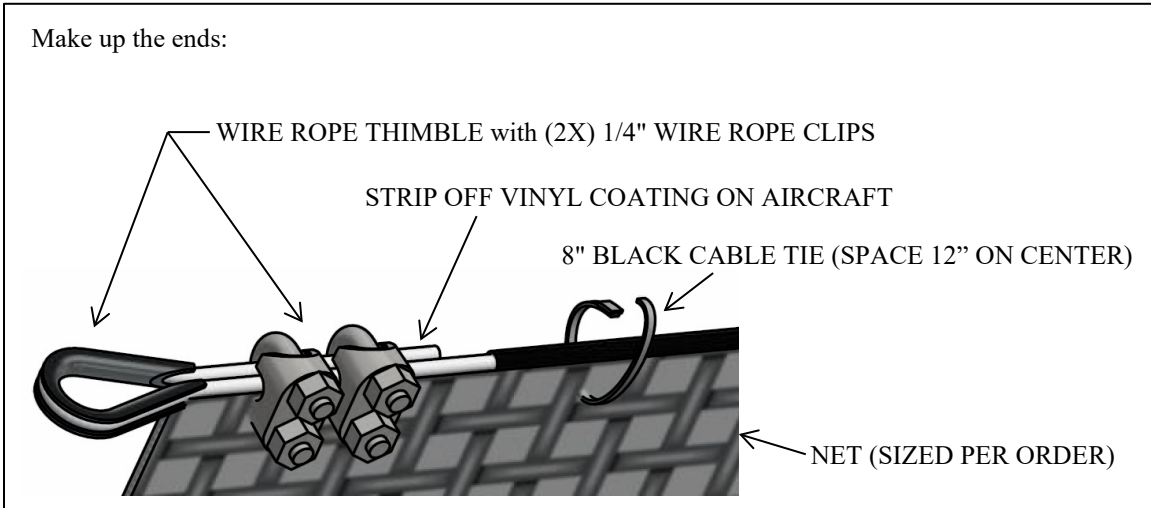
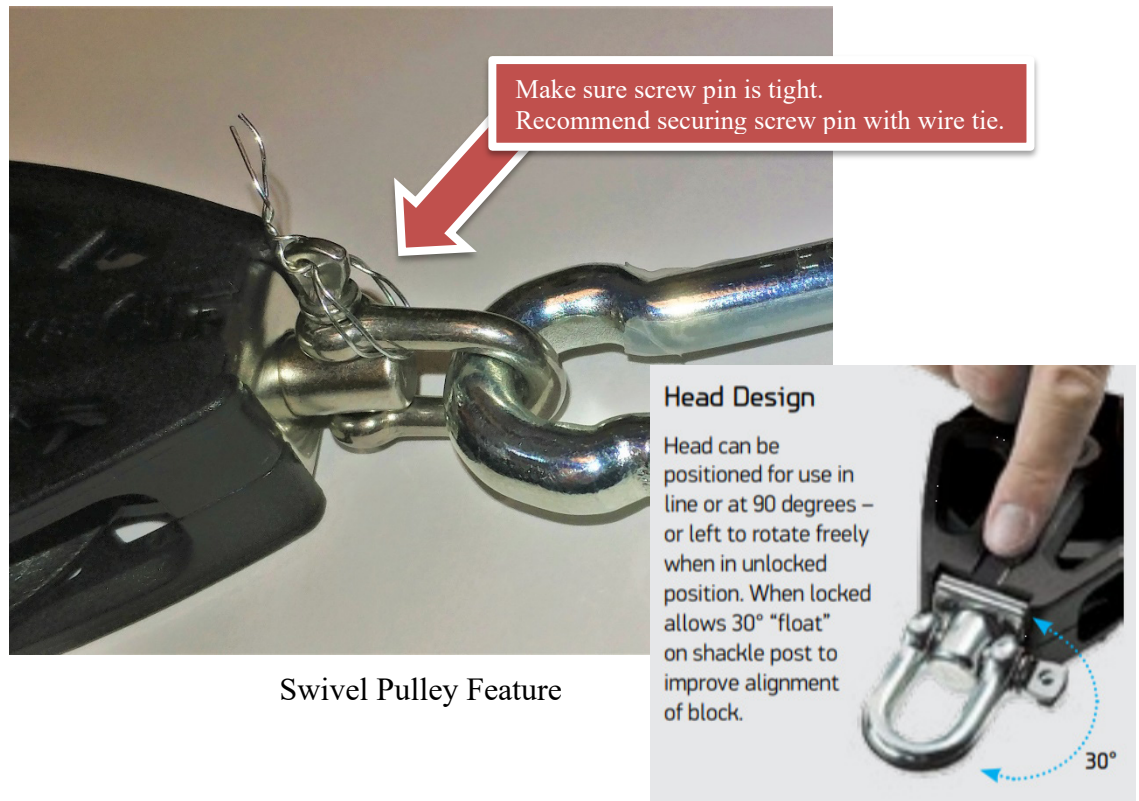


Figure 6



**Install Net:**

Lay the net sections out lengthwise along the base of the poles. Attach D-Rings to the net at each intermediate pole location. Attach the hoisting ropes to each cable end and D-Ring. Slowly raise the net up, attaching the sliding cable loops to the net approximately every 5 ft. While raising the net, attach any net sections together using cable ties located about 12" on center.

Once the net is fully raised, secure the bottom edge of net to each pole as shown in below.

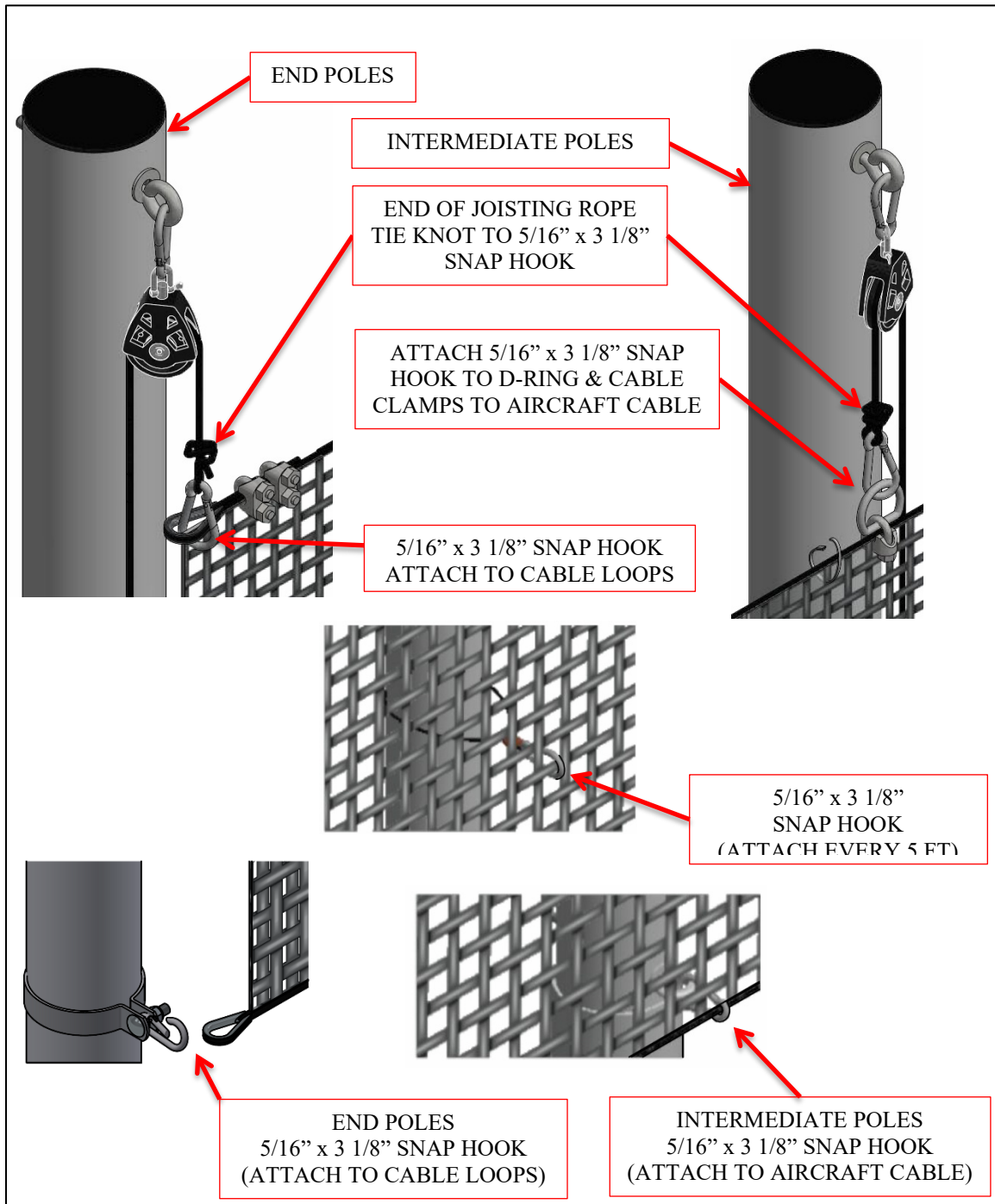


Figure 7

**MAINTENANCE:**

- Before and after each season, thoroughly inspect the net for wear. Repair any holes to prevent them from getting wider.
- Remove and store the net after the seasons use.
- Remove and or lower and secure all netting if a major storm or extreme winds more than 50 mph are forecasted.
- When the poles are removed, ground sleeves can be covered by ground sleeve covers sold separately.

