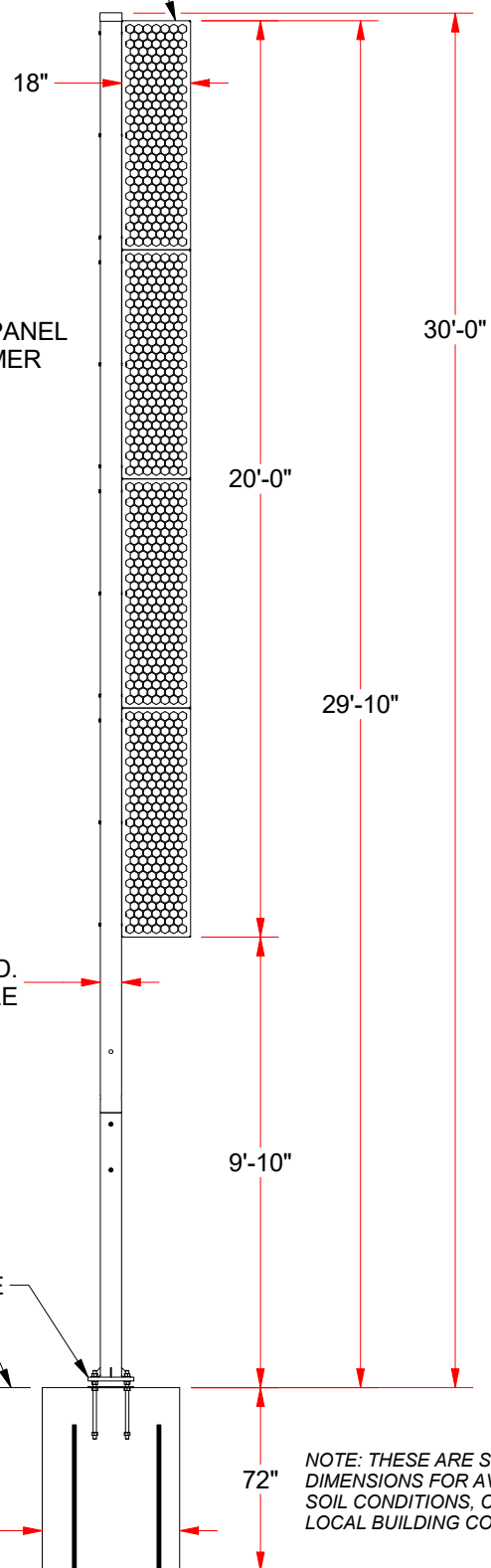




30 FT SOFTBALL FOUL POLE SURFACE MOUNT

HEAVY DUTY 18" x 60" x 2" x 11 GA. STEEL PERFORATED METAL PANEL



FEATURES:

- > MAIN POLE: 2 PIECE 5" SCH40, 5 9/16" OD STEEL PIPE
- > HEAVY DUTY 18" x 60" x 2" x 11 GA. STEEL PERFORATED METAL PANEL
- > TOUGH POWDER COATED YELLOW FINISH OVER ZINC RICH PRIMER
- > PERMANENT OR SEMI-PERMANENT INSTALLATION
- > FOUL POLE DESIGNED TO WITHSTAND UP TO 150 MPH WIND
- > TYPICAL FOOTING SHOWN (BASED ON 100 MPH WIND)

POWDER COATED COLORS:

- > WHITE: SBFP-30SM-WT
- > ORANGE: SBFP-30SM-OR

ADJUSTABLE LEVELING PLATE

FIELD LEVEL

NOTE: THESE ARE SUGGESTED
DIMENSIONS FOR AVERAGE
SOIL CONDITIONS, CONSULT
LOCAL BUILDING CODES.



SBFP-30SM

30 FT SOFTBALL FOUL POLE
SURFACE MOUNT

© COPYRIGHT 2017 JAYPRO SPORTS, LLC. ALL RIGHTS RESERVED
THIS PRINT IS THE PROPERTY OF JAYPRO SPORTS, LLC. AND MAY
NOT BE REPRODUCED WITHOUT WRITTEN PERMISSION

www.jaypro.com
(800) 243-0533
976 Hartford Turnpike
Waterford, CT 06385 USA

Sheet 1 of 1