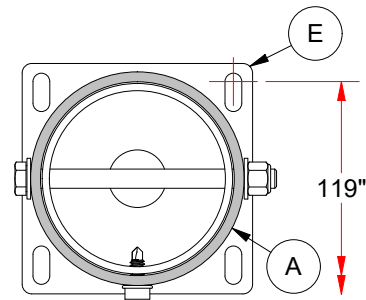
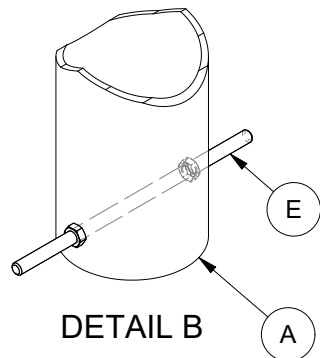


MODEL 656

5 9/16" ROUND POST 6 FOOT EXTENSION, DIRECT MOUNT

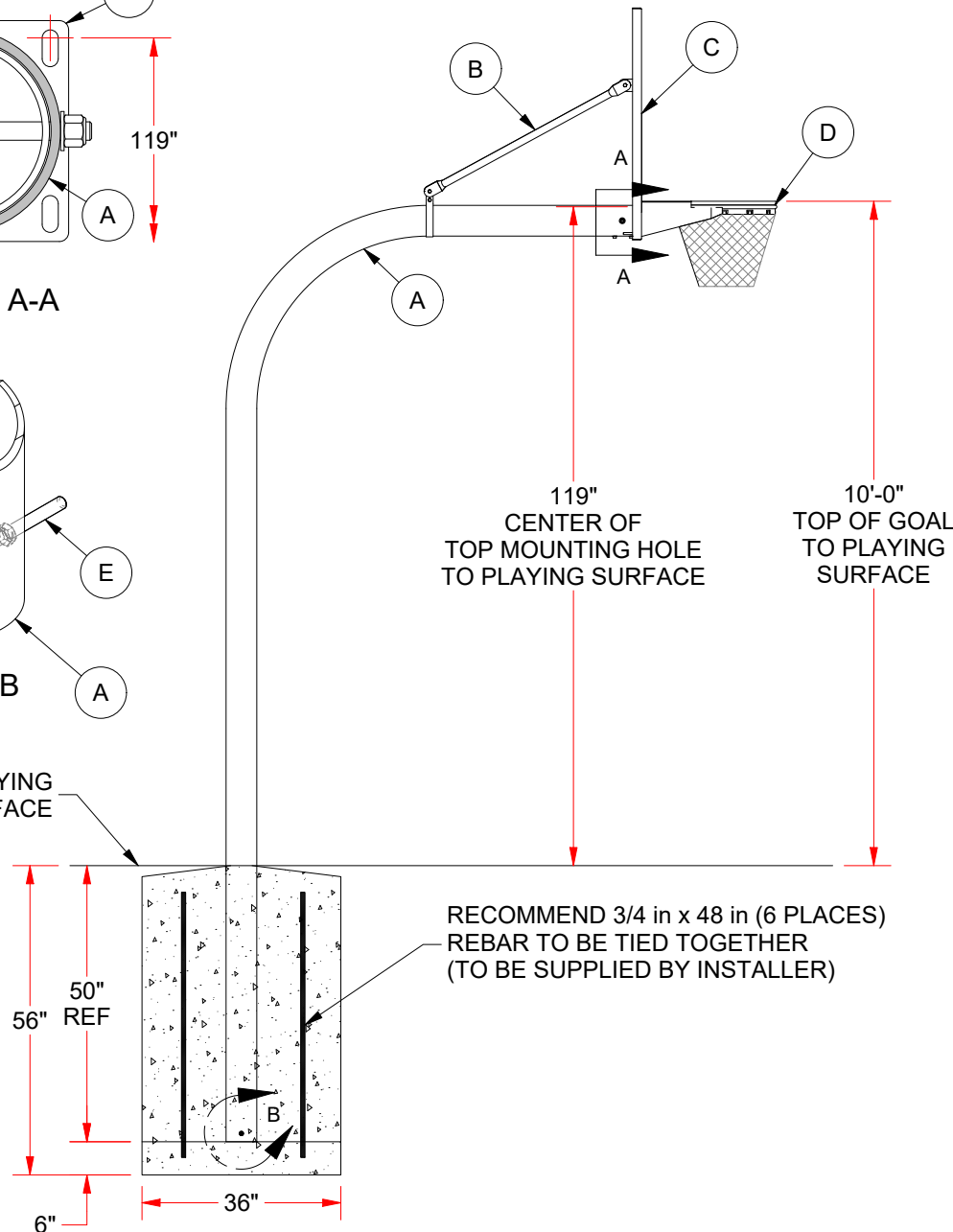


SECTION A-A



DETAIL B

PLAYING SURFACE



IMPORTANT NOTICE:

- 1) EQUIPMENT SHOULD BE CHECKED REGULARLY FOR PROPER CONNECTING HARDWARE AND STRUCTURAL INTEGRITY. REPLACE ANY DAMAGED OR MISSING HARDWARE IMMEDIATELY.
- 2) USE OF THE EQUIPMENT OTHER THAN INTENDED, MAY BE HAZARDOUS.
- 3) ALTERATION OR MODIFICATION OF THIS EQUIPMENT MAY BE HAZARDOUS AND RESULT IN INJURY. FOR REPAIR OR REPLACEMENT, CONTACT JAYPRO SPORTS.

* ACTUAL DIMENSION MAY VARY DEPENDING ON CHOICE OF BACKBOARD USED.

CHECK LOCAL BUILDING CODES BEFORE STARTING THE FOOTING, AS BUILDING CODES MAY VARY. LOCAL BUILDING CODES SHOULD BE ADHERED TO IF REQUIREMENTS ARE GREATER THAN THOSE OUTLINED HERE.

NOTES:

- 1) BACKBOARD VARIES PER CUSTOMER ORDER.
- 2) GOAL VARIES PER CUSTOMER ORDER.
- 3) HARDWARE KIT 656K INCLUDES BRACES, BRACKETS & BAND CLAMP FOR ALL UNITS.

Typical Parts List for 656 Units

ITEM	QTY	PART #	DESCRIPTION
A	1	656U	UPRIGHT DIR MNT 5 9/16 OD
B	1	656K	HARDWARE KIT
C	1	SEE NOTE 1	BACKBOARD
D	1	SEE NOTE 2	GOAL
E	1	NWG50-K	HUB KIT w/ HARDWARE



976 Hartford Turnpike
Waterford, CT 06385 USA
(800)243-0533 Fax: (800)988-3363
www.jaypro.com

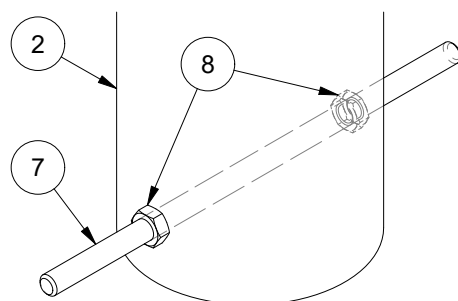
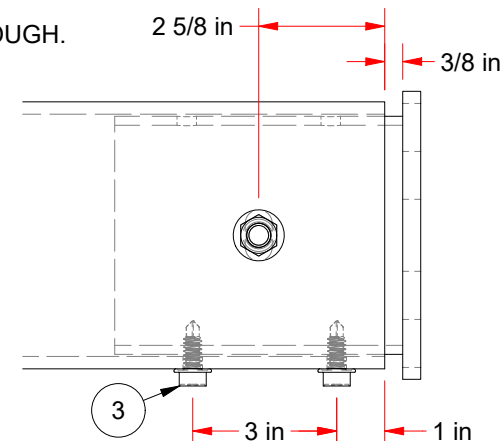
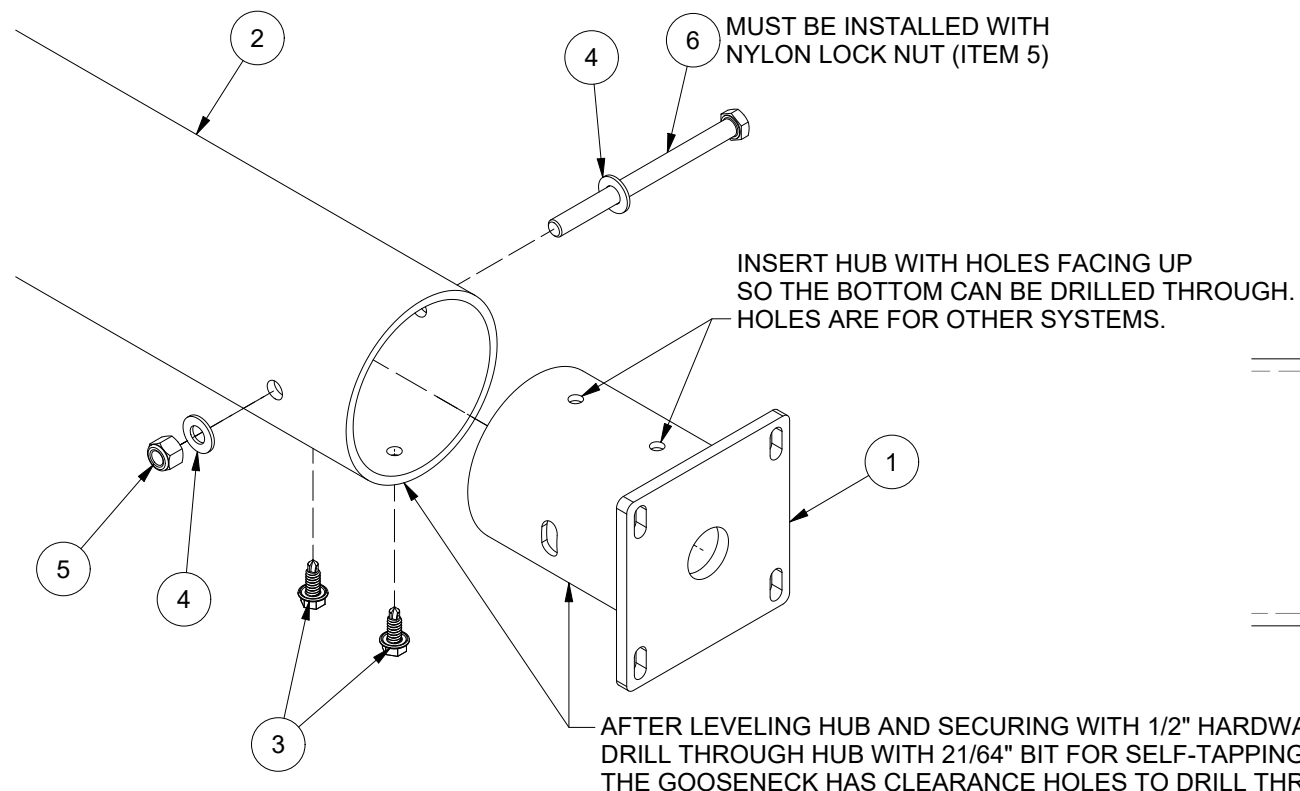
MODEL NUMBER: 656
CHECKED BY: WVB

PRODUCT NAME:
656 INSTALLATION INSTRUCTIONS

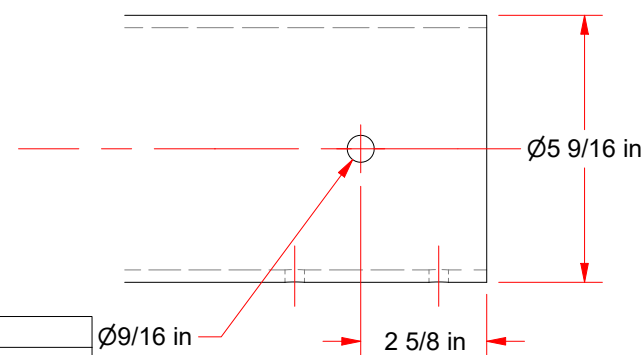
DATE: 1/25/2024
REV: B
DRAWN BY: Moune T.
SHEET: 1 OF 7

NWG50-K

IMPORTANT NOTE: USE THESE INSTRUCTIONS WHEN INSTALLING THE HUB ON A 5 9/16" DIAMETER GOOSENECK.



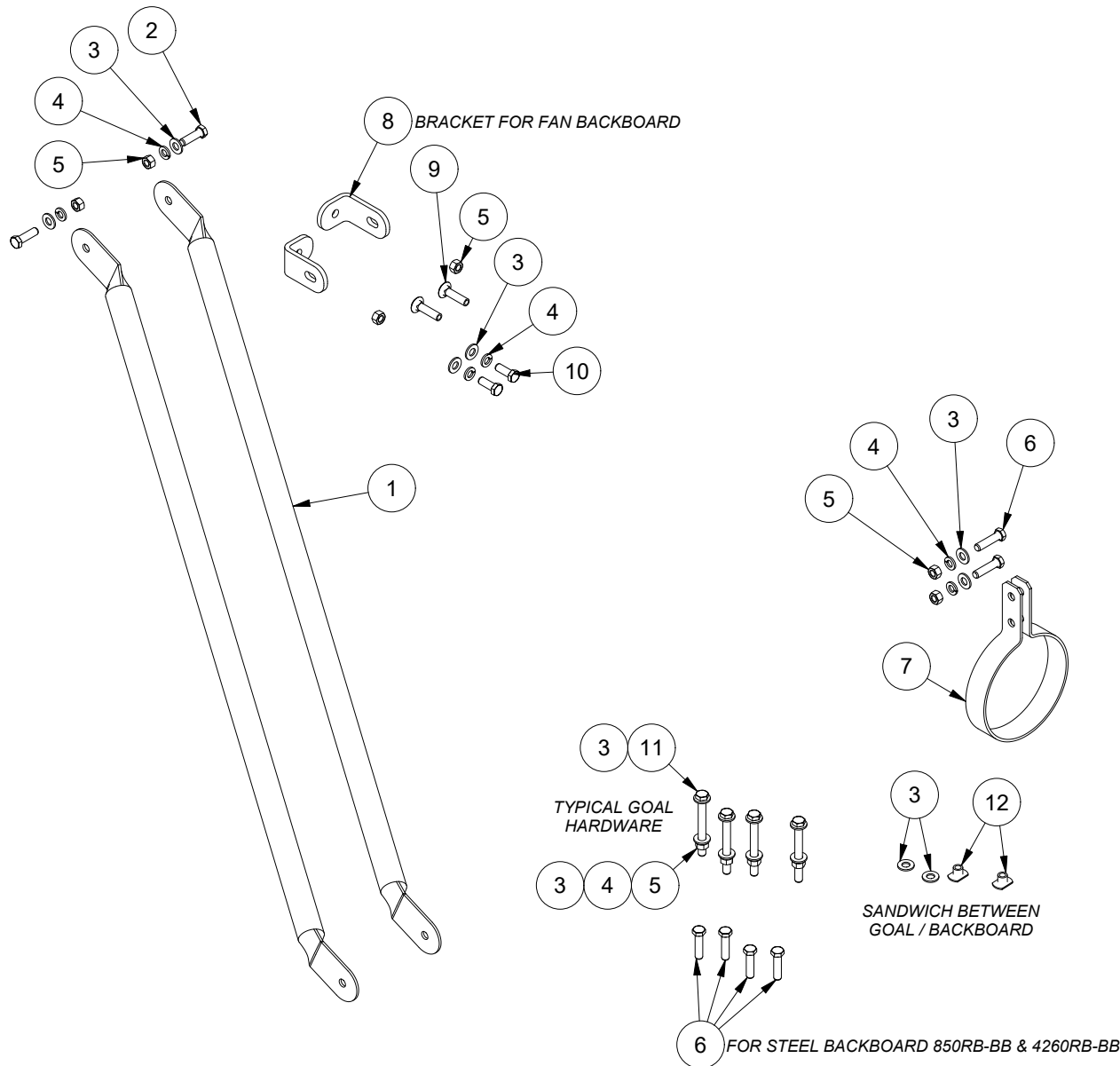
AT THE BOTTOM OF THE GOOSENECK
INSTALL THREADED ROD WITH
TWO 1/2" HEX NUTS FOR ANTI-ROTATION



ITEM	QTY	PART #	DESCRIPTION
1	1	NWG50	NO WELD GOOSENECK BRACKET 5" OD
2	1	656U	5 9/16" GOOSENECK
3	2	HS1389	3/8 x 1 1/2 FLANGED HEX HD TAPPING SCREW
4	2	HW2044	1/2 SAE WASHER-ZP-GrNC
5	1	HN5036	1/2-13 UNC-Nylon Lock Nut-SS-GrNC
6	1	HS5171	1/2-13 x 6-1/2 HEX CAP SCREW-ZP-Gr8
7	1	SR5187	1/2-13 x 12 THREADED ROD STUDS ZP
8	2	HN269	1/2-13 HEX JAM NUT ZP

jaypro sports
976 Hartford Turnpike
Waterford, CT 06385 USA
(800)243-0533 Fax: (800)988-3363
www.jayprosports.com

MODEL NUMBER: NWG50-K	CHECKED BY: WVB
PRODUCT NAME: 656 GOOSENECK WITH INNER HUB	
DATE: 1/25/2024	REV: B
DRAWN BY: Moune T.	SHEET: 2 OF 7



NOTES:

- 1) 656K SAME KIT FOR OTHER UNITS.
- 2) 656FAB-K IS USED ON FAN.

ITEM	QTY	PART #	DESCRIPTION
1	2	BR45	1.315 DIA BACKBOARD BRACE
7	1	BRC5916	5 9/16 OD BAND CLAMP
2	2	HS287	3/8-16 x 1-1/4 HEX CAP SCREW-ZP-GrNC
6	6	HS288	3/8-16 x 1-1/2 HEX CAP SCREW-ZP-GrNC
3	16	HW2050	3/8 STD WASHER-ZP-GrNC
8	2	SR5370	850RB-BB MOUNTING TAB
4	10	HW334	3/8 LOCK WASHER-ZP-GrNC
12	2	HN5040	3/8-16 SLABBASE TEE NUT 18-8 SS
5	10	HN264	3/8 - 16 Hex Nut - ZP - GrNC
9	2	HB5031	3/8-16 x 1-1/2 CARRIAGE BOLT-ZP
10	2	HS286	3/8-16 x 1 HEX CAP SCREW-ZP-GrNC
11	4	HS5388	3/8-16 x 3 1/2" GRD5 FULL THRD HX HD ZP



976 Hartford Turnpike
Waterford, CT 06385 USA
(800)243-0533 Fax: (800)988-3363
www.jaypro.com

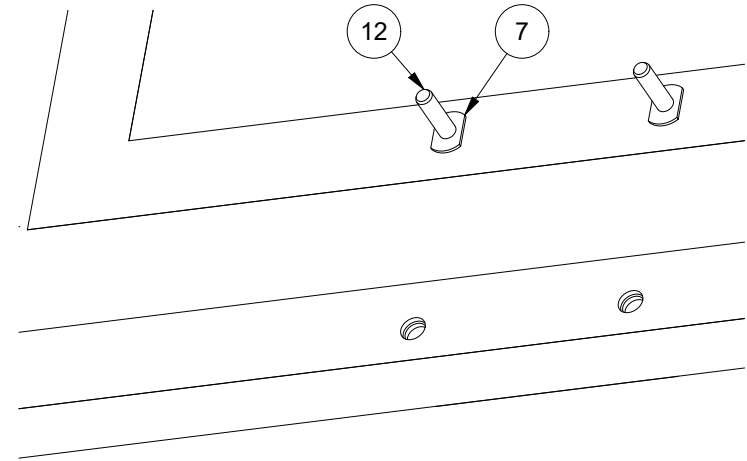
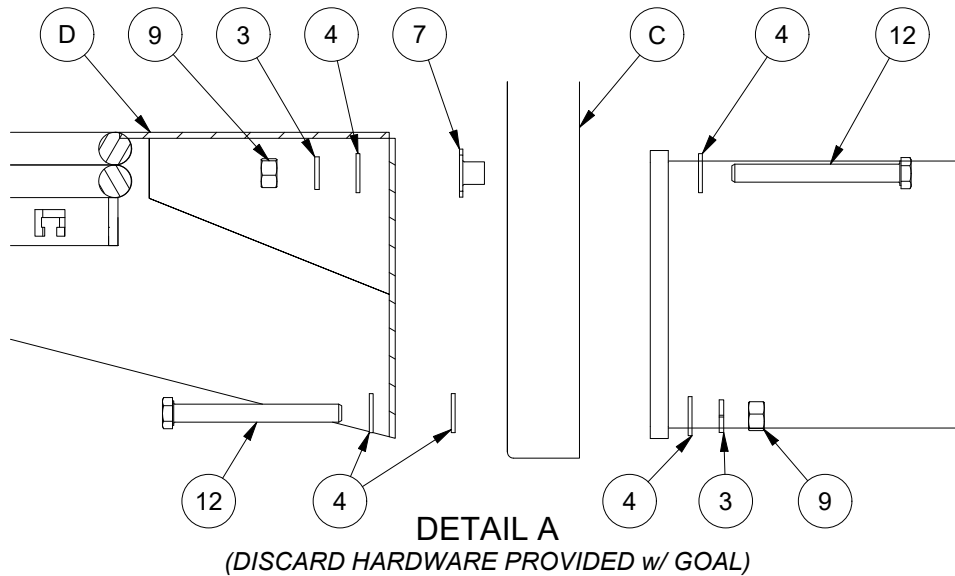
MODEL NUMBER: 656K
CHECKED BY: WVB

PRODUCT NAME: HARDWARE KIT FOR 656

DATE: 1/25/2024
REV: B
DRAWN BY: Moune T.
SHEET: 3 OF 7

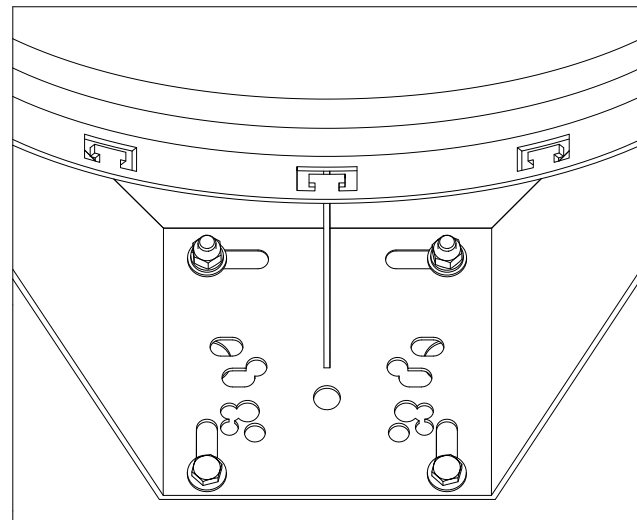
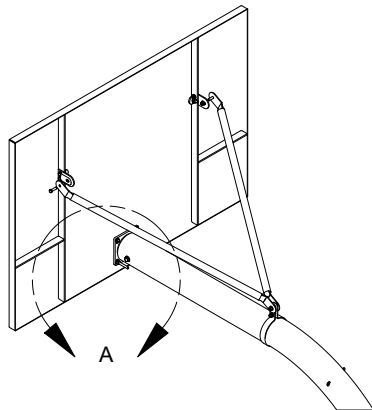
TYPICAL GOAL ATTACHMENT

BACKBOARD: SR-PERF, AL-PERF or ACRB-72



BACKBOARD TEE NUTS

(ALLOWS GOAL REMOVAL w/ BACKBOARD ON GOOSENECK)
TEE NUTS DO NOT FIT WITH EVERY BACKBOARD
AND CAN BE IGNORED ON STEEL & ALUMINUM FAN BOARDS.



NOTES:

- 1) BACKBOARD VARIES PER CUSTOMER ORDER.
- 2) GOAL VARIES PER CUSTOMER ORDER.
- 3) HARDWARE LISTED BELOW IS FOR TYPICAL GOAL ATTACHMENT. FAN & STEEL BACKBOARDS USE SHORTER HARDWARE BOLTS.

ITEM	QTY	PART #	DESCRIPTION
C	1	SEE NOTE 1	BACKBOARD
D	1	SEE NOTE 2	GOAL
3	10	HW334	3/8 LOCK WASHER-ZP-GrNC
4	16	HW2050	3/8 STD WASHER-ZP-GrNC
7	2	HN5040	3/8-16 SLABBASE TEE NUT 18-8 SS
9	10	HN264	3/8 - 16 Hex Nut - ZP - GrNC
12	4	HS5388	3/8-16 x 3 1/2" GRD5 FULL THRD HX HD ZP



976 Hartford Turnpike
Waterford, CT 06385 USA
(800)243-0533 Fax: (800)988-3363
www.jaypro.com

MODEL NUMBER:

656

CHECKED BY:

WVB

PRODUCT NAME:

656 INSTALLATION INSTRUCTIONS

DATE:
1/25/2024

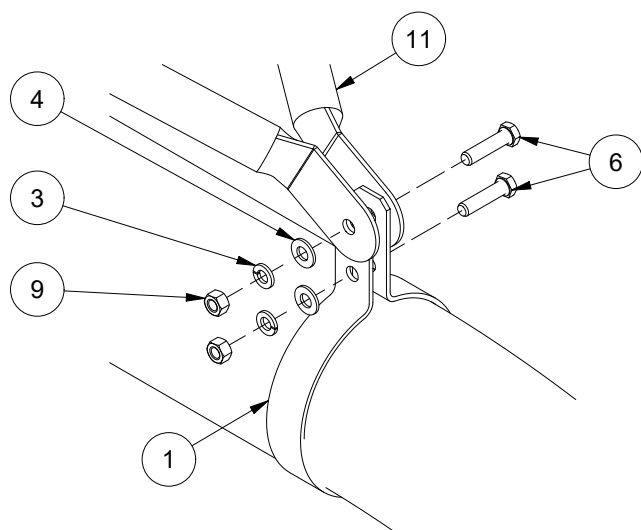
REV:
B

DRAWN BY:
Moune T.

SHEET:
4 OF 7

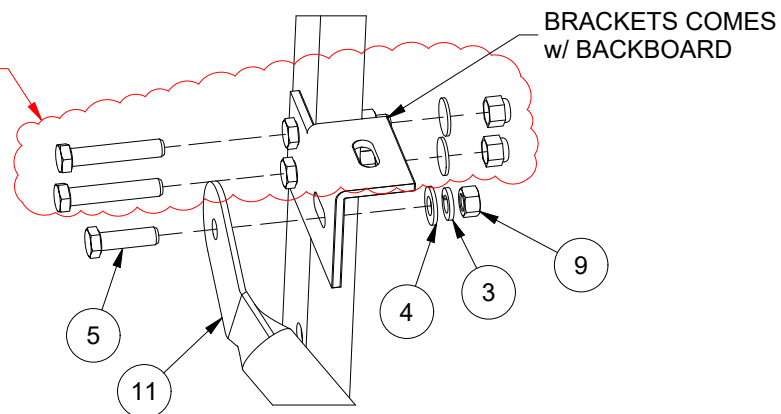
42" RECTANGULAR REAR VERTICAL FRAME BACKBOARD MOUNT

BACKBOARD: SR-PERF, AL-PERF or ACRB-72

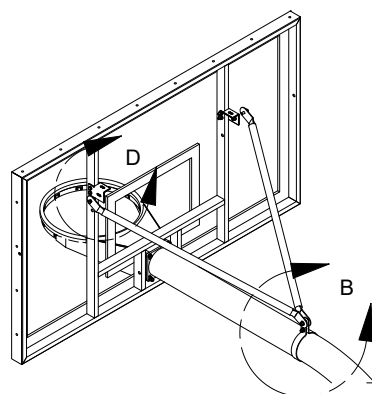


DETAIL B
(TYPICAL FOR ALL BACKBOARDS)

HARDWARE FOR BRACKETS
COMES w/ BACKBOARD



DETAIL D
(FOR SR-PERF, AL-PERF & ACRB-72)




BACKBOARDS:

SR-PERF (42" Rectangular Perforated Steel Backboard)
AL-PERF (42" Rectangular Perforated Aluminum Backboard)
ACRB-72 (42" Rectangular Acrylic Backboard)

NOTES:

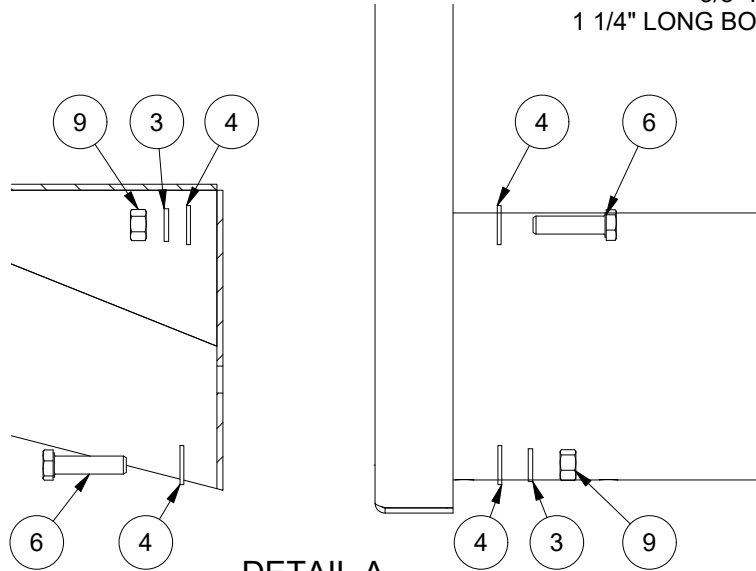
- 1) BACKBOARD VARIES PER CUSTOMER ORDER.
- 2) GOAL VARIES PER CUSTOMER ORDER.
- 3) HARDWARE LISTED BELOW FOR ATTACHING BRACING.

Parts List for attaching rear vertical mount backboards				
ITEM	QTY	PART #	DESCRIPTION	
1	1	BRC5916	5 9/16 OD BAND CLAMP	
3	10	HW334	3/8 LOCK WASHER-ZP-GrNC	
4	16	HW2050	3/8 STD WASHER-ZP-GrNC	
5	2	HS287	3/8-16 x 1-1/4 HEX CAP SCREW-ZP-GrNC	
6	6	HS288	3/8-16 x 1-1/2 HEX CAP SCREW-ZP-GrNC	
9	10	HN264	3/8 - 16 Hex Nut - ZP - GrNC	
11	2	BR45	1.315 DIA BACKBOARD BRACE	
		MODEL NUMBER: 656		CHECKED BY: WVB
		PRODUCT NAME: 656 INSTALLATION INSTRUCTIONS		
976 Hartford Turnpike Waterford, CT 06385 USA (800)243-0533 Fax: (800)988-3363 www.jaypro.com		DATE: 1/25/2024	REV: B	DRAWN BY: Moune T. SHEET: 5 OF 7

42" x 72" & 42" x 60" RECTANGULAR STEEL BACKBOARDS

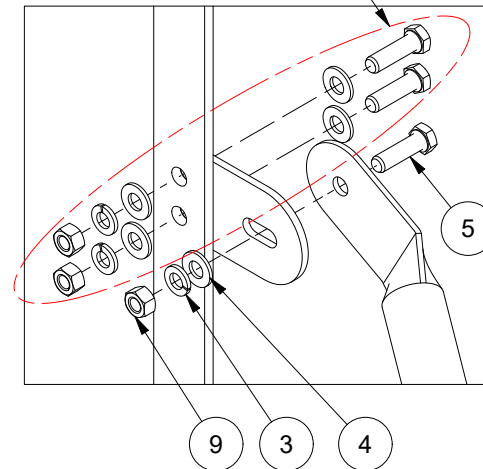
BACKBOARDS: 850RB-BB & 4260RB-BB

3/8" HARDWARE COMES w/ BACKBOARD
1 1/4" LONG BOLT, WASHER, LOCK WASHER & NUT



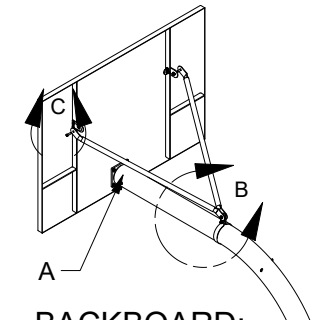
DETAIL A

(DISCARD HARDWARE PROVIDED w/ GOAL)



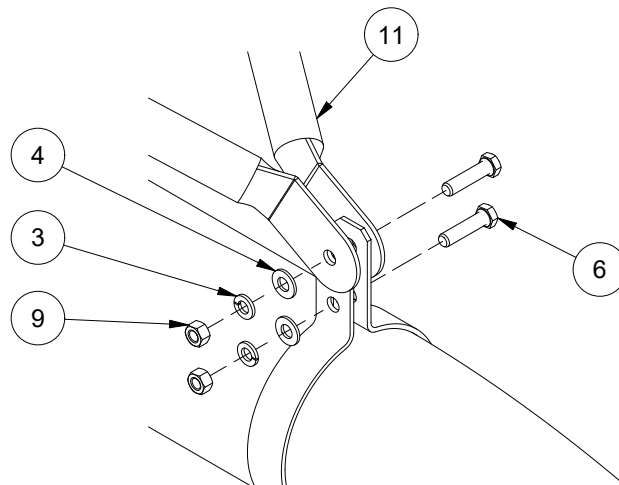
DETAIL C

(FOR 850RB-BB & 4260RB-BB)



BACKBOARD:

850RB-BB & 4260RB-BB
(Rectangular Steel Backboard)



DETAIL B

(TYPICAL FOR ALL BACKBOARDS)

NOTES:

- 1) BACKBOARD VARIES PER CUSTOMER ORDER.
- 2) GOAL VARIES PER CUSTOMER ORDER.
- 3) HARDWARE LISTED BELOW FOR ATTACHING BRACING.

Parts List For 850RB-BB (42" Rectangular Steel Backboard)

ITEM	QTY	PART #	DESCRIPTION
1	1	BRC5916	5 9/16 OD BAND CLAMP
2	2	SR5370	850RB-BB MOUNTING TAB
3	10	HW334	3/8 LOCK WASHER-ZP-GrNC
4	16	HW2050	3/8 STD WASHER-ZP-GrNC
5	2	HS287	3/8-16 x 1-1/4 HEX CAP SCREW-ZP-GrNC
6	6	HS288	3/8-16 x 1-1/2 HEX CAP SCREW-ZP-GrNC
8	2	HB5031	3/8-16 x 1-1/2 CARRIAGE BOLT-ZP
9	10	HN264	3/8 - 16 Hex Nut - ZP - GrNC
11	2	BR45	1.315 DIA BACKBOARD BRACE



976 Hartford Turnpike
Waterford, CT 06385 USA
(800)243-0533 Fax: (800)988-3363
www.jaypro.com

MODEL NUMBER:

656

CHECKED BY:

WVB

PRODUCT NAME:

656 INSTALLATION INSTRUCTIONS

DATE:
1/25/2024

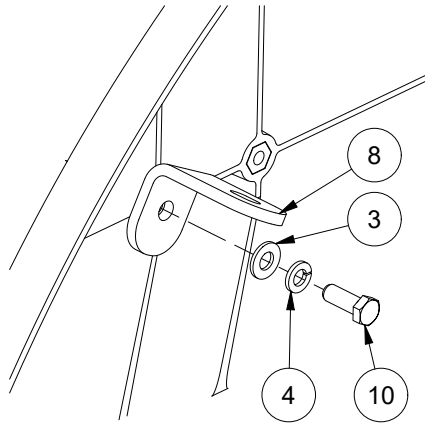
REV:
B

DRAWN BY:
Moune T.

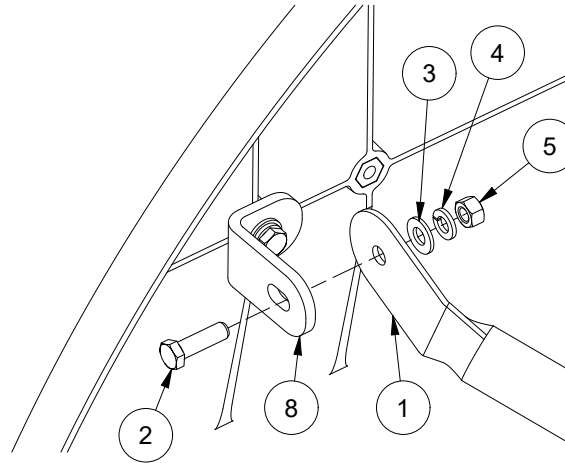
SHEET:
6 OF 7

FAN ALUMINUM BACKBOARD MOUNT

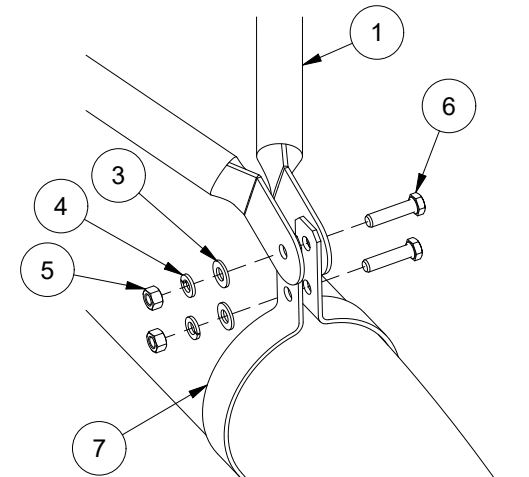
BACKBOARD: ALB-24BT



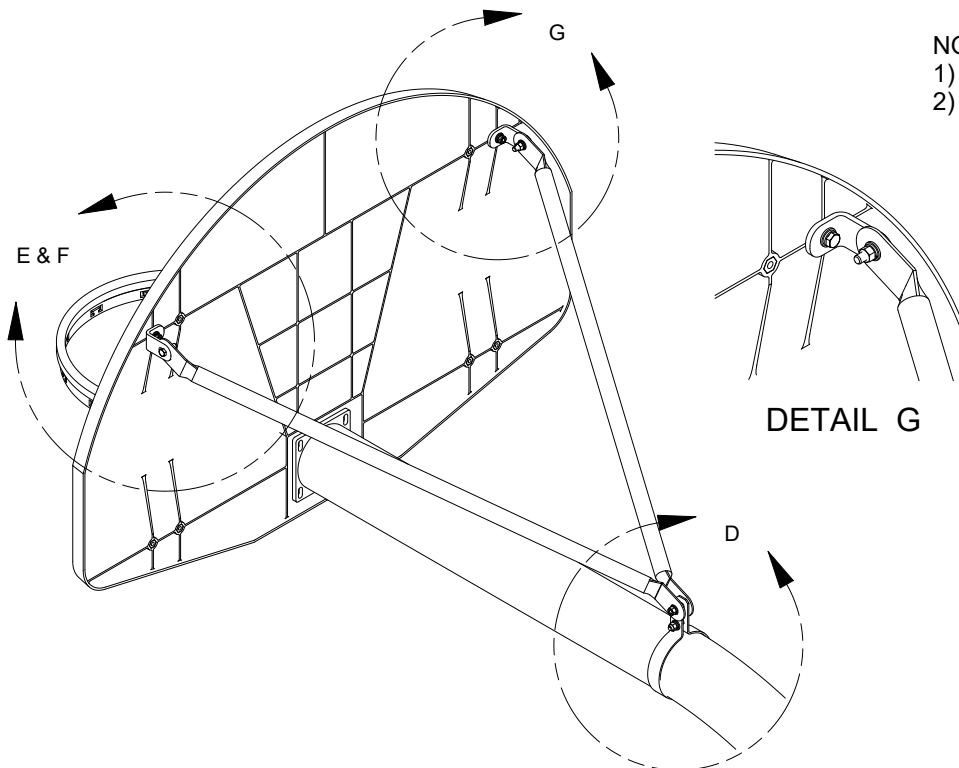
DETAIL E



DETAIL F



DETAIL D



NOTES:

- 1) WHEN ATTACHING FAN BOARD, SOME ITEMS MAY NOT BE USED
- 2) HARDWARE BALLOON ITEMS SHOWN FOR ATTACHING BRACING.

ITEM	QTY	PART #	DESCRIPTION
1	2	BR45	1.315 DIA BACKBOARD BRACE
2	2	HS287	3/8-16 x 1-1/4 HEX CAP SCREW-ZP-GrNC
3	16	HW2050	3/8 STD WASHER-ZP-GrNC
4	10	HW334	3/8 LOCK WASHER-ZP-GrNC
5	10	HN264	3/8 - 16 Hex Nut - ZP - GrNC
6	6	HS288	3/8-16 x 1-1/2 HEX CAP SCREW-ZP-GrNC
7	1	BRC5916	5 9/16 OD BAND CLAMP
8	2	SR5370	850RB-BB MOUNTING TAB
9	2	HB5031	3/8-16 x 1-1/2 CARRIAGE BOLT-ZP
10	2	HS286	3/8-16 x 1 HEX CAP SCREW-ZP-GrNC
11	4	HS5388	3/8-16 x 3 1/2" GRD5 FULL THRD HX HD ZP
12	2	HN5040	3/8-16 SLABBASE TEE NUT 18-8 SS



976 Hartford Turnpike
Waterford, CT 06385 USA
(800)243-0533 Fax: (800)988-3363
www.jaypro.com

MODEL NUMBER:

656

CHECKED BY:

WVB

PRODUCT NAME:

656 INSTALLATION INSTRUCTIONS

DATE:
1/25/2024

REV:
B

DRAWN BY:
Moune T.

SHEET:
7 OF 7