

# MODEL 996

## 4 1/2" ROUND POST 4 FOOT EXTENSION, DIRECT MOUNT

### IMPORTANT NOTICE:

- 1) EQUIPMENT SHOULD BE CHECKED REGULARLY FOR PROPER CONNECTING HARDWARE AND STRUCTURAL INTEGRITY. REPLACE ANY DAMAGED OR MISSING HARDWARE IMMEDIATELY.
- 2) USE OF THE EQUIPMENT OTHER THAN INTENDED, MAY BE HAZARDOUS.
- 3) ALTERATION OR MODIFICATION OF THIS EQUIPMENT MAY BE HAZARDOUS AND RESULT IN INJURY. FOR REPAIR OR REPLACEMENT, CONTACT JAYPRO SPORTS.

\* ACTUAL DIMENSION MAY VARY DEPENDING ON CHOICE OF BACKBOARD USED.

CHECK LOCAL BUILDING CODES BEFORE STARTING THE FOOTING, AS BUILDING CODES MAY VARY. LOCAL BUILDING CODES SHOULD BE ADHERED TO IF REQUIREMENTS ARE GREATER THAN THOSE OUTLINED HERE.

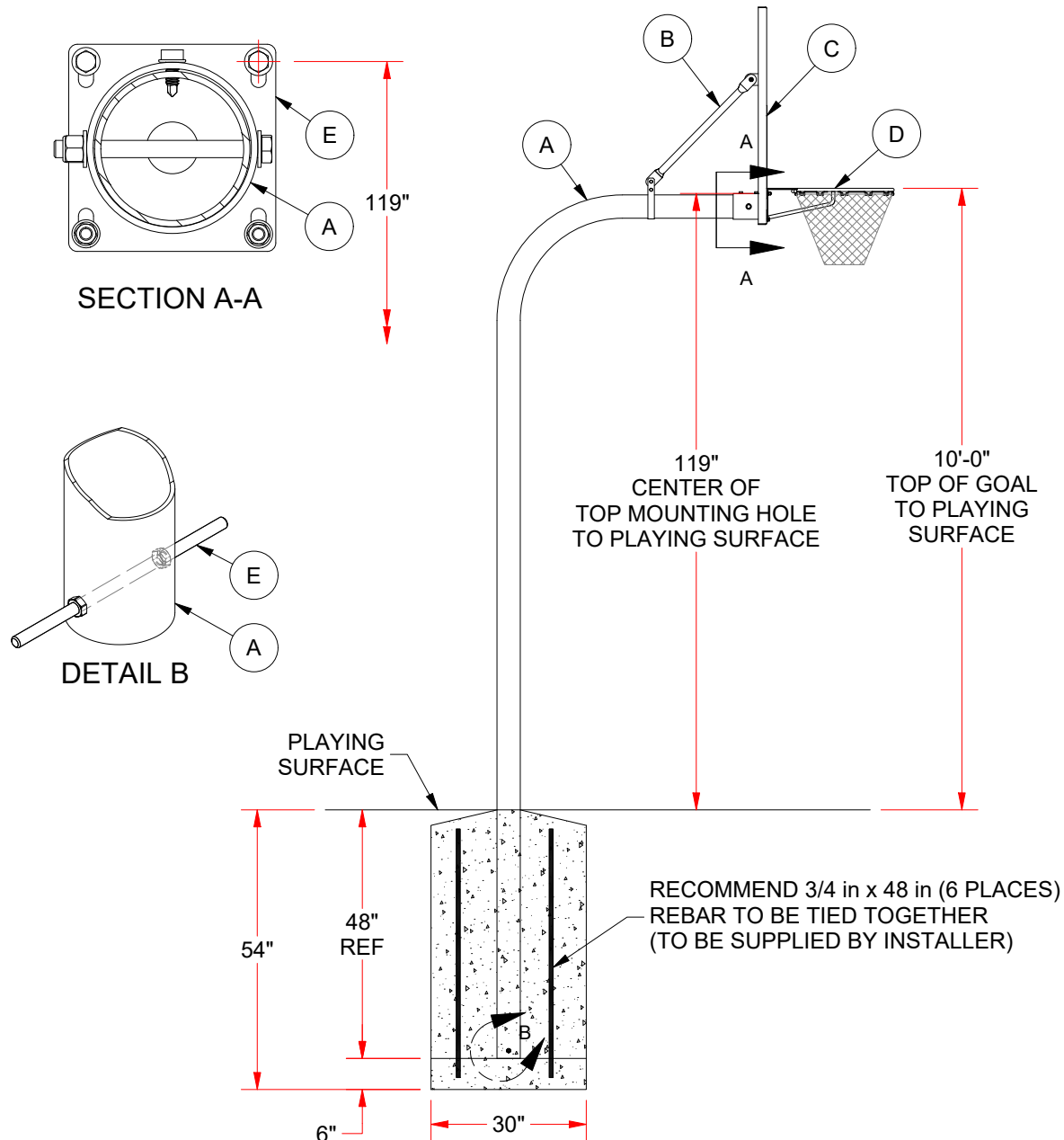
### NOTES:

- 1) BACKBOARD VARIES PER CUSTOMER ORDER.
- 2) GOAL VARIES PER CUSTOMER ORDER.
- 3) HARDWARE KIT 996BK INCLUDES BRACES, BRACKETS & BAND CLAMP FOR ALL UNITS.

Typical Parts List for 996 Units			
ITEM	QTY	PART #	DESCRIPTION
A	1	996U	4 1/2" OD GOSENECK UPRIGHT
B	1	996BK	HARDWARE KIT
C	1	SEE NOTE 1	BACKBOARD
D	1	SEE NOTE 2	GOAL
E	1	NWG50-K	HUB KIT w/ HARDWARE

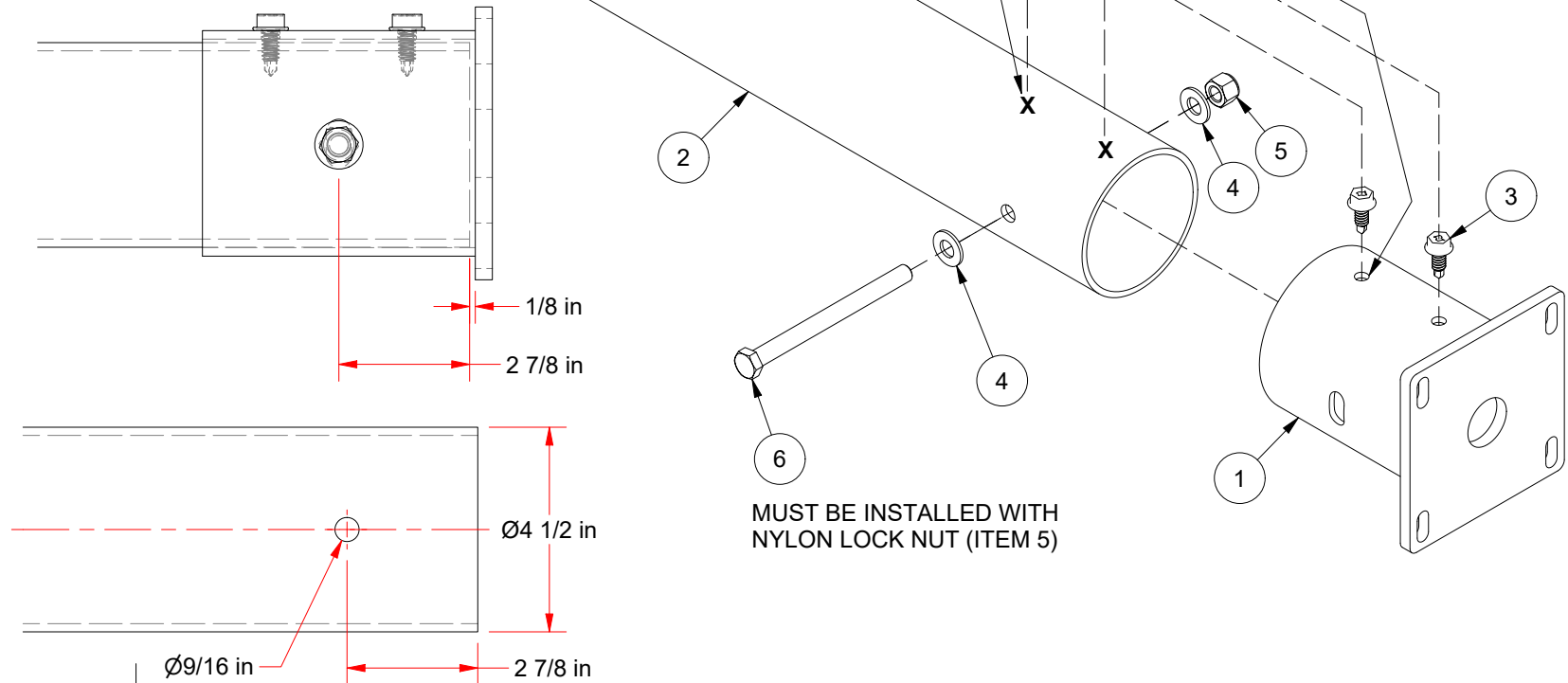
  

 <p>976 Hartford Turnpike Waterford, CT 06385 USA (800)243-0533 Fax: (800)988-3363 www.jaypro.com</p>		MODEL NUMBER: 996	CHECKED BY: WVB
		PRODUCT NAME: 996 INSTALLATION INSTRUCTIONS	
DATE: 1/29/2024	REV: A	DRAWN BY: Moune T.	SHEET: 1 OF 7

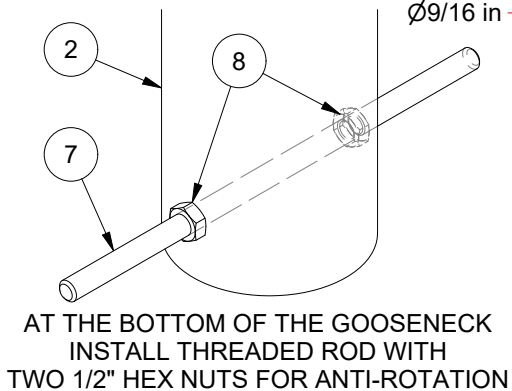


AFTER LEVELING HUB AND SECURING WITH 1/2" HARDWARE, DRILL THROUGH GOOSENECK WITH 21/64" BIT FOR SELF-TAPPING SCREWS

**IMPORTANT NOTE: USE THESE INSTRUCTIONS WHEN INSTALLING THE HUB ON A 4 1/2" DIAMETER GOOSENECK.**



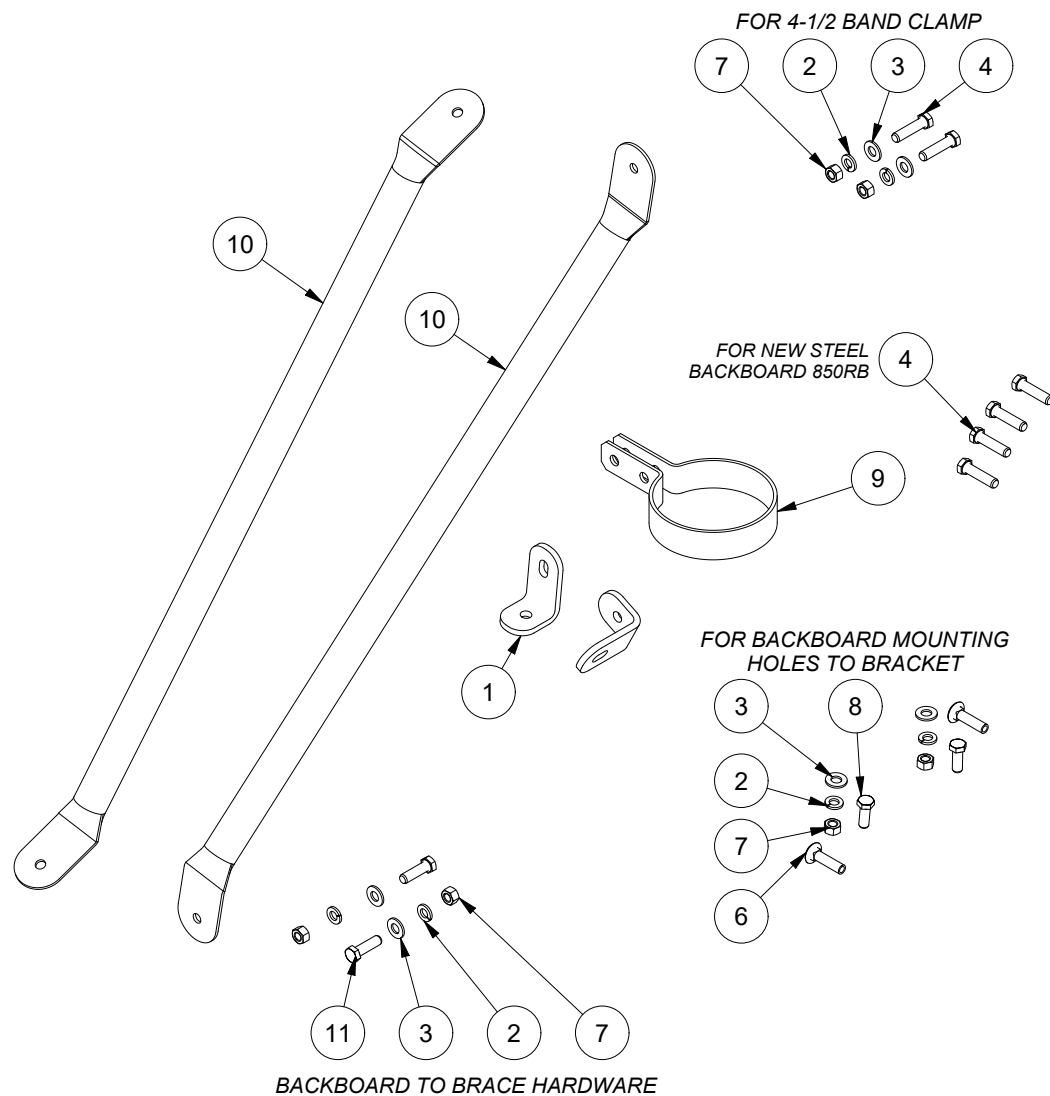
MUST BE INSTALLED WITH NYLON LOCK NUT (ITEM 5)



ITEM	QTY	PART #	DESCRIPTION
1	1	NWG50	NO WELD GOOSENECK BRACKET 5" OD
2	1	996U	996 GOOSENECK
3	2	HS1389	3/8 x 1 1/2 FLANGED HEX HD TAPPING SCREW
4	2	HW2044	1/2 SAE WASHER-ZP-GrNC
5	1	HN2951	1/2-13 UNC-Nylon Lock Nut-ZP-GrNC
6	1	HS3077	1/2-13 x 6 HEX HEAD CAP SCREW ZP
7	1	SR5187	1/2-13 x 12 THREADED ROD STUDS ZP
8	2	HN269	1/2-13 HEX JAM NUT ZP

**jaypro sports**  
976 Hartford Turnpike  
Waterford, CT 06385 USA  
(800)243-0533 Fax: (800)988-3363  
www.jayprosports.com

MODEL NUMBER:	996	CHECKED BY:	WVB
PRODUCT NAME:	996 GOOSENECK WITH OUTER HUB		
DATE:	1/29/2024	REV:	A
DRAWN BY:	Moune T.	SHEET:	2 OF 7



ITEM	QTY	PART #	DESCRIPTION
10	2	BRC30	1.315 DIA BB BRACE
9	1	BRC45	4 1/2 OD BAND CLAMP
11	2	HS287	3/8-16 x 1-1/4 HEX CAP SCREW-ZP-GrNC
4	6	HS288	3/8-16 x 1-1/2 HEX CAP SCREW-ZP-GrNC
7	10	HN264	3/8 - 16 Hex Nut - ZP - GrNC
3	16	HW2050	3/8 STD WASHER-ZP-GrNC
1	2	SR5370	850RB-BB MOUNTING TAB
6	2	HB5031	3/8-16 x 1-1/2 CARRIAGE BOLT-ZP
8	2	HS286	3/8-16 x 1 HEX CAP SCREW-ZP-GrNC
12	4	HS5388	3/8-16 x 3 1/2" GRD5 FULL THRD HX HD ZP
2	10	HW334	3/8 LOCK WASHER-ZP-GrNC
5	2	HN5040	3/8-16 SLABBASE TEE NUT 18-8 SS



976 Hartford Turnpike  
Waterford, CT 06385 USA  
(800)243-0533 Fax: (800)988-3363  
www.jaypro.com

MODEL NUMBER: 996  
CHECKED BY: WVB

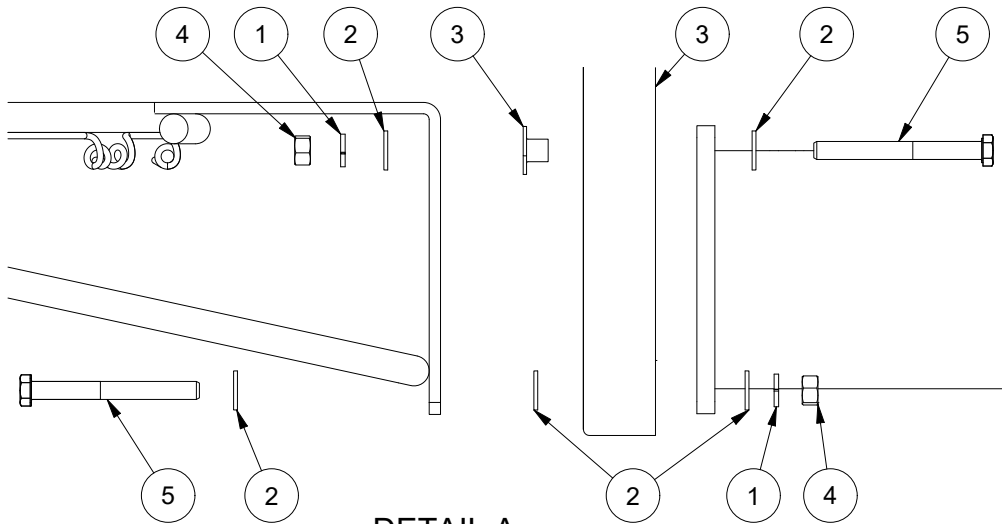
PRODUCT NAME:

996 INSTALLATION INSTRUCTIONS

DATE: 1/29/2024  
REV: A  
DRAWN BY: Moune T.  
SHEET: 3 OF 7

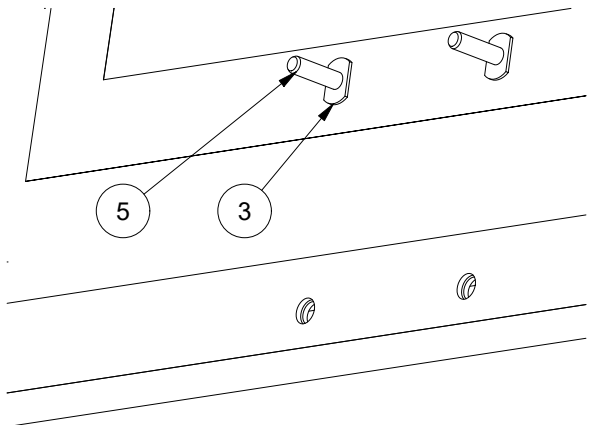
# TYPICAL GOAL ATTACHMENT

BACKBOARD: SR-PERF, AL-PERF or ACRB-72



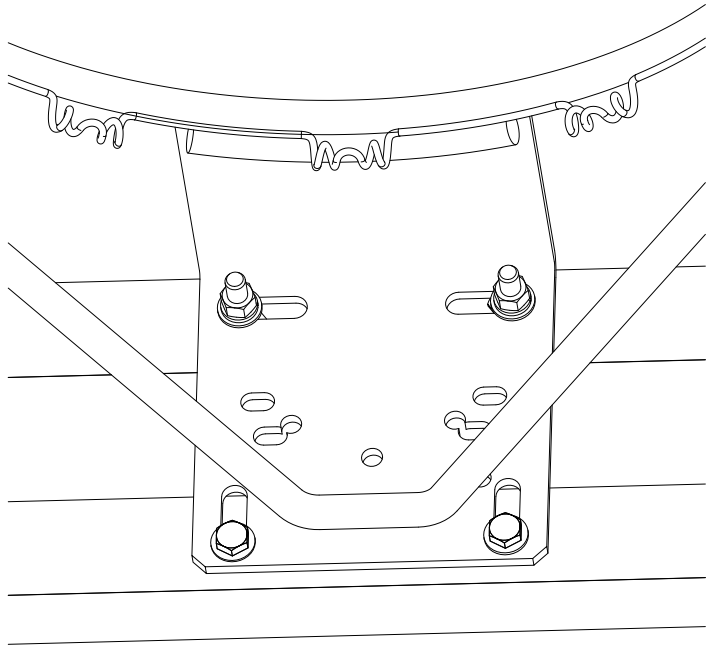
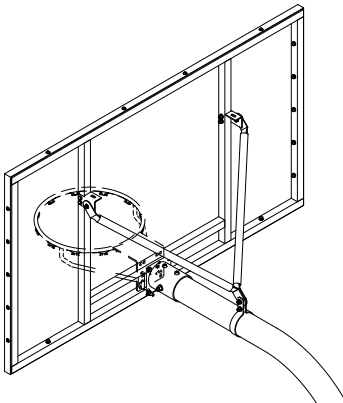
DETAIL A

(DISCARD HARDWARE PROVIDED w/ GOAL)



## BACKBOARD TEE NUTS

(ALLOWS GOAL REMOVAL w/ BACKBOARD ON GOOSENECK)  
TEE NUTS DO NOT FIT WITH EVERY BACKBOARD  
AND CAN BE IGNORED



## NOTES:

- 1) BACKBOARD VARIES PER CUSTOMER ORDER.
- 2) GOAL VARIES PER CUSTOMER ORDER.
- 3) HARDWARE LISTED BELOW IS FOR TYPICAL GOAL ATTACHMENT. FAN & BACKBOARDS USE SHORTER HARDWARE BOLTS.

ITEM	QTY	PART #	DESCRIPTION
1	10	HW334	3/8 LOCK WASHER-ZP-GrNC
2	16	HW2050	3/8 STD WASHER-ZP-GrNC
3	2	HN5040	3/8-16 SLABBASE TEE NUT 18-8 SS
4	10	HN264	3/8 - 16 Hex Nut - ZP - GrNC
5	4	HS5388	3/8-16 x 3 1/2" GRD5 FULL THRD HX HD ZP



976 Hartford Turnpike  
Waterford, CT 06385 USA  
(800)243-0533 Fax: (800)988-3363  
www.jaypro.com

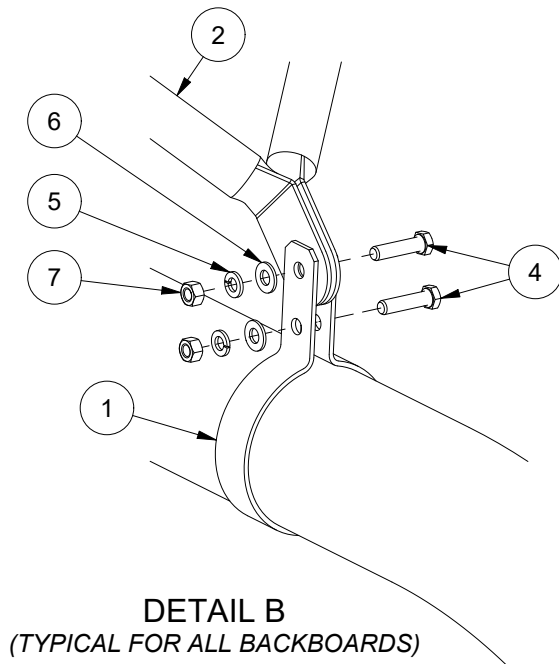
MODEL NUMBER: 996  
CHECKED BY: WVB

PRODUCT NAME:  
996 INSTALLATION INSTRUCTIONS

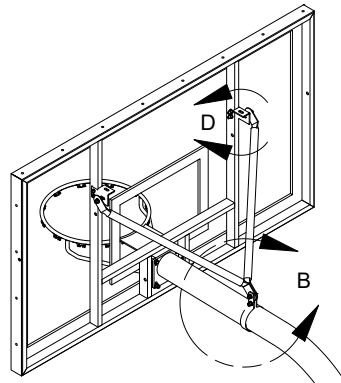
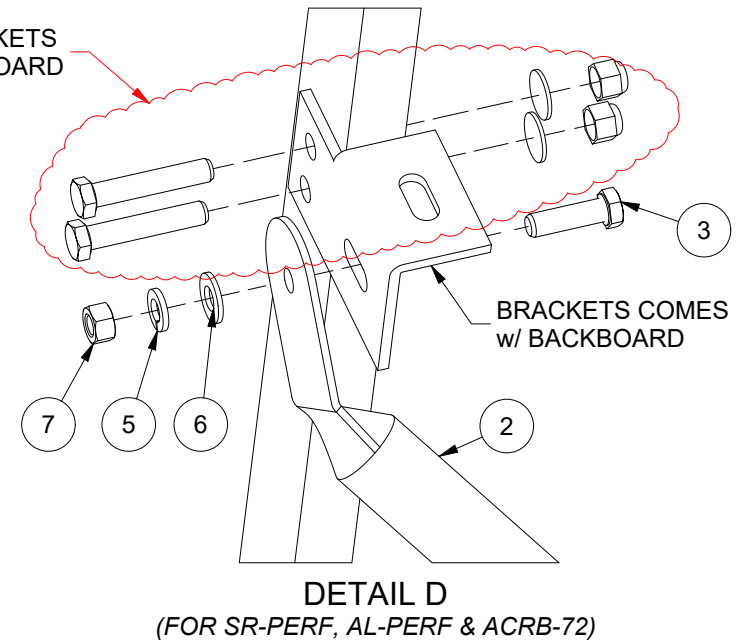
DATE: 1/29/2024  
REV: A  
DRAWN BY: Mouné T.  
SHEET: 4 OF 7

# 42" RECTANGULAR REAR VERTICAL FRAME BACKBOARD MOUNT

BACKBOARD: SR-PERF, AL-PERF or ACRB-72



HARDWARE FOR BRACKETS  
COMES w/ BACKBOARD



## BACKBOARDS:

SR-PERF (42" Rectangular Perforated Steel Backboard)  
AL-PERF (42" Rectangular Perforated Aluminum Backboard)  
ACRB-72 (42" Rectangular Acrylic Backboard)

## NOTES:

- 1) BACKBOARD VARIES PER CUSTOMER ORDER.
- 2) GOAL VARIES PER CUSTOMER ORDER.
- 3) HARDWARE LISTED BELOW FOR ATTACHING BRACING.

Parts List for attaching rear vertical mount backboards			
ITEM	QTY	PART #	DESCRIPTION
1	1	BRC45	4 1/2 OD BAND CLAMP
2	2	BRC30	1.315 DIA BB BRACE
3	2	HS287	3/8-16 x 1-1/4 HEX CAP SCREW-ZP-GrNC
4	6	HS288	3/8-16 x 1-1/2 HEX CAP SCREW-ZP-GrNC
5	8	HW334	3/8 LOCK WASHER-ZP-GrNC
6	12	HW2050	3/8 STD WASHER-ZP-GrNC
7	8	HN264	3/8 - 16 Hex Nut - ZP - GrNC



976 Hartford Turnpike  
Waterford, CT 06385 USA  
(800)243-0533 Fax: (800)988-3363  
www.jaypro.com

MODEL NUMBER: 996  
CHECKED BY: WVB

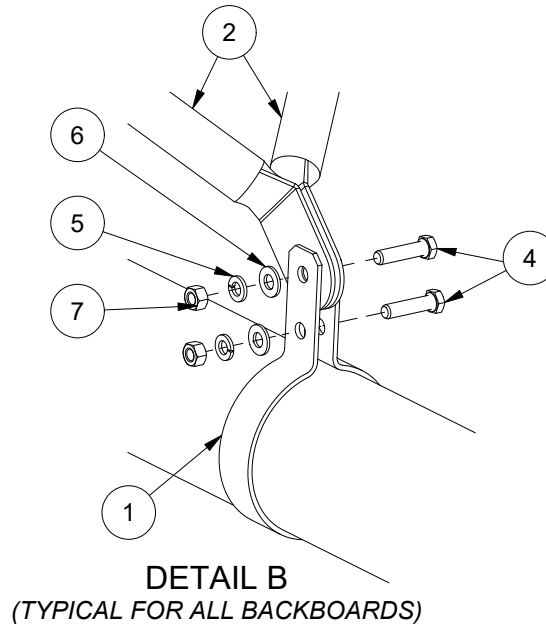
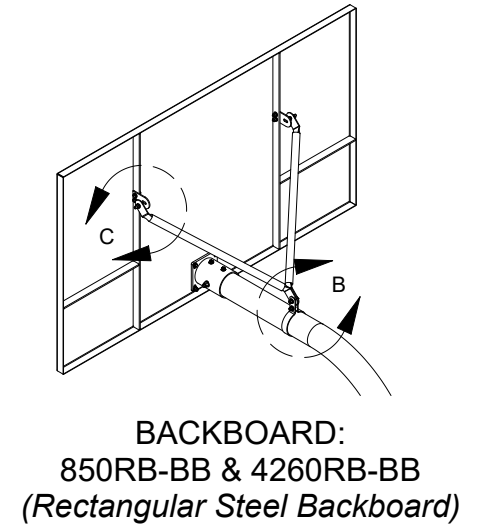
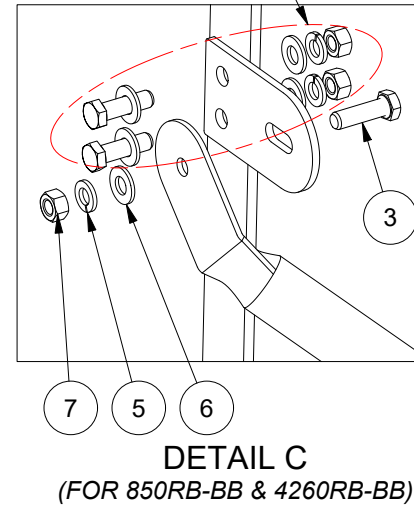
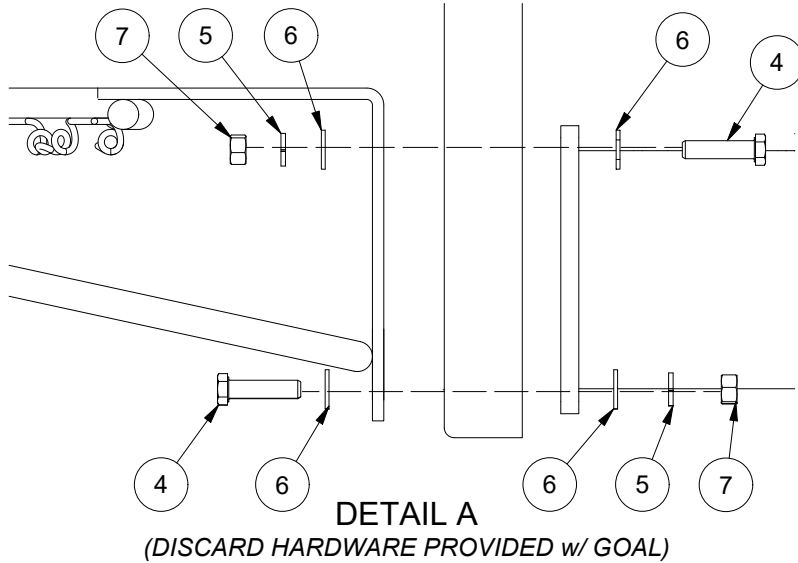
PRODUCT NAME:  
996 INSTALLATION INSTRUCTIONS

DATE: 1/29/2024  
REV: A  
DRAWN BY: Moune T.  
SHEET: 5 OF 7

# 42" x 72" & 42" x 60" RECTANGULAR STEEL BACKBOARDS

BACKBOARD: 850RB-BB & 4260RB-BB

3/8" HARDWARE COMES w/ BACKBOARD  
1 1/4" LONG BOLT, WASHER, LOCK WASHER & NUT



## NOTES:

- 1) BACKBOARD VARIES PER CUSTOMER ORDER.
- 2) GOAL VARIES PER CUSTOMER ORDER.
- 3) HARDWARE LISTED BELOW FOR ATTACHING BRACING.

Parts List For 850RB-BB (42" Rectangular Steel Backboard)			
ITEM	QTY	PART #	DESCRIPTION
1	1	BRC45	4 1/2 OD BAND CLAMP
2	2	BRC30	1.315 DIA BB BRACE
3	2	HS287	3/8-16 x 1-1/4 HEX CAP SCREW-ZP-GrNC
4	6	HS288	3/8-16 x 1-1/2 HEX CAP SCREW-ZP-GrNC
5	8	HW334	3/8 LOCK WASHER-ZP-GrNC
6	12	HW2050	3/8 STD WASHER-ZP-GrNC
7	8	HN264	3/8 - 16 Hex Nut - ZP - GrNC



976 Hartford Turnpike  
Waterford, CT 06385 USA  
(800)243-0533 Fax: (800)988-3363  
www.jaypro.com

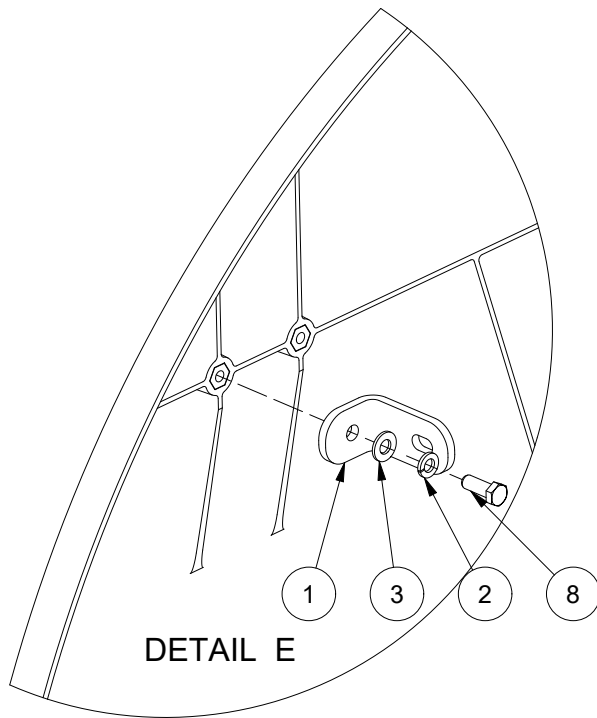
MODEL NUMBER: 996  
CHECKED BY: WVB

PRODUCT NAME:  
996 INSTALLATION INSTRUCTIONS

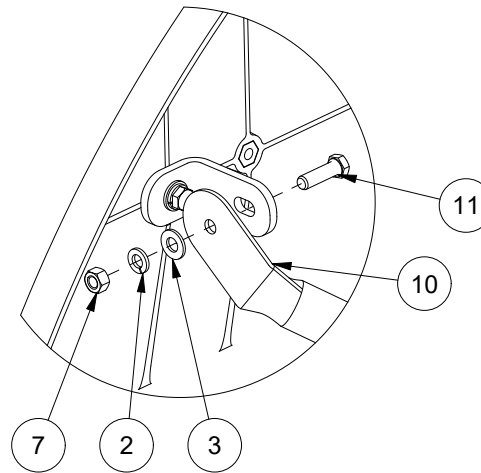
DATE: 1/29/2024  
REV: A  
DRAWN BY: Mouné T.  
SHEET: 6 OF 7

# FAN ALUMINUM BACKBOARD MOUNT

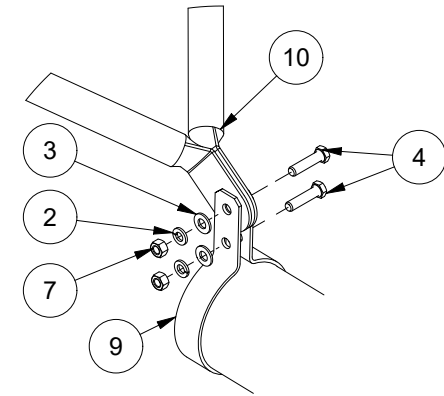
BACKBOARD: ALB-24BT



DETAIL E



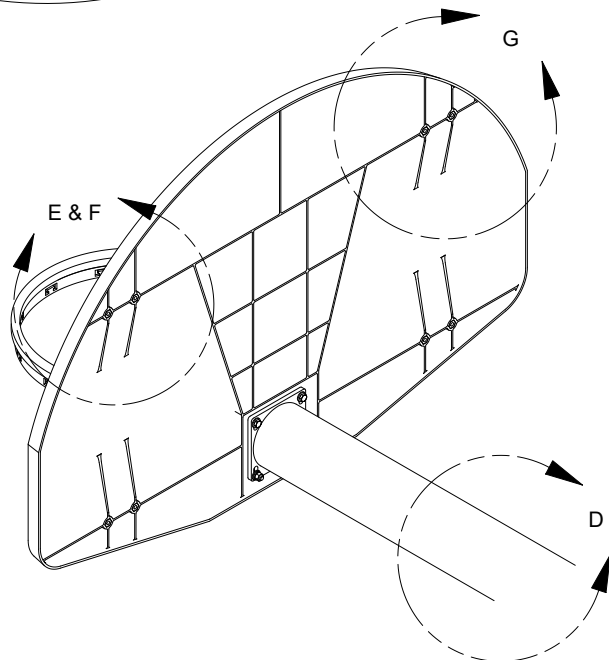
DETAIL F



DETAIL D

## NOTES:

- 1) WHEN ATTACHING FAN BOARD, SOME ITEMS MAY NOT BE USED
- 2) HARDWARE BALLOON ITEMS SHOWN FOR ATTACHING BRACING.



DETAIL G

## Parts List 996BK Hardware Kit

ITEM	QTY	PART #	DESCRIPTION
1	2	SR5370	850RB-BB MOUNTING TAB
2	10	HW334	3/8 LOCK WASHER-ZP-GrNC
3	16	HW2050	3/8 STD WASHER-ZP-GrNC
4	6	HS288	3/8-16 x 1-1/2 HEX CAP SCREW-ZP-GrNC
5	2	HN5040	3/8-16 SLABBASE TEE NUT 18-8 SS
6	2	HB5031	3/8-16 x 1-1/2 CARRIAGE BOLT-ZP
7	10	HN264	3/8 - 16 Hex Nut - ZP - GrNC
8	2	HS286	3/8-16 x 1 HEX CAP SCREW-ZP-GrNC
9	1	BRC45	4 1/2 OD BAND CLAMP
10	2	BRC30	1.315 DIA BB BRACE
11	2	HS287	3/8-16 x 1-1/4 HEX CAP SCREW-ZP-GrNC
12	4	HS5388	3/8-16 x 3 1/2" GRD5 FULL THRD HX HD ZP



976 Hartford Turnpike  
Waterford, CT 06385 USA  
(800)243-0533 Fax: (800)988-3363  
www.jaypro.com

MODEL NUMBER:

996

CHECKED BY:

WVB

PRODUCT NAME:

996 INSTALLATION INSTRUCTIONS

DATE:  
1/29/2024

REV:  
A

DRAWN BY:  
Moune T.

SHEET:  
7 OF 7