



-- CVAC66 --  
(THE TITAN CVX2 OUTDOOR ADJUSTABLE w/ ACRYLIC)  
Installation Instructions



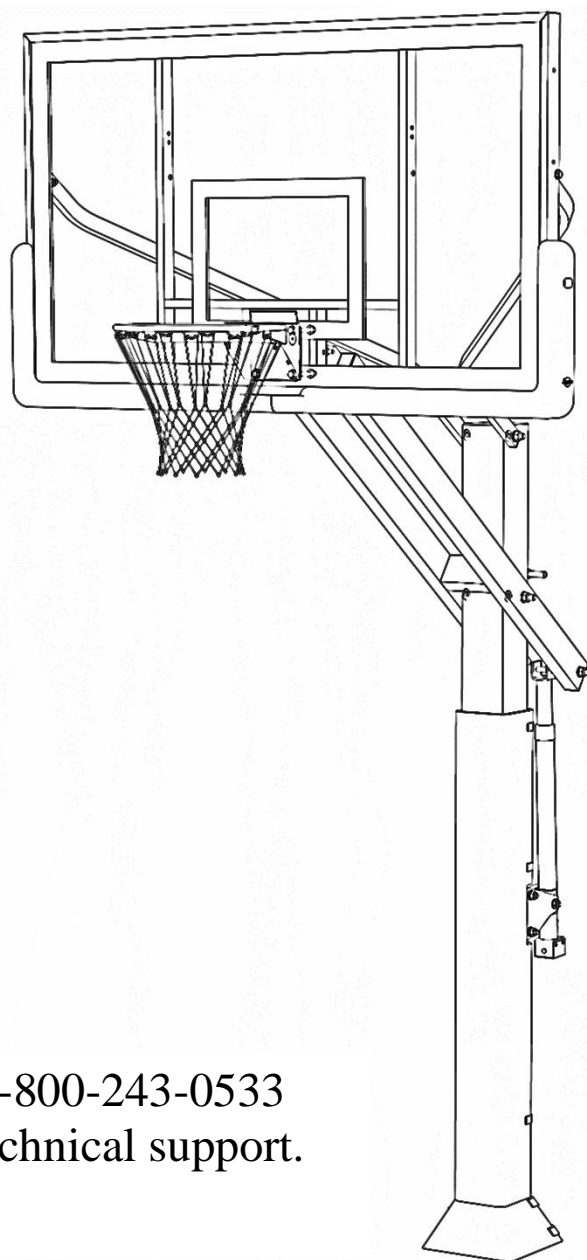
**WARNING**



FAILURE TO COMPLY WITH ANY OF THE WARNINGS IN THESE INSTRUCTIONS MAY RESULT IN SERIOUS PERSONAL INJURY.

FAILURE TO COMPLY MAY ALSO RESULT IN PROPERTY DAMAGE. PLEASE HEED ALL WARNINGS AND CAUTIONS TO ENSURE YOUR SAFETY.

DO NOT ATTEMPT TO ASSEMBLE THIS SYSTEM WITHOUT CAREFULLY READING AND FOLLOWING ALL INSTRUCTIONS BEGIN BY IDENTIFYING AND TAKING INVENTORY OF ALL PARTS USING THE PARTS LIST PROVIDED.



Call Jaypro Sports Equipment at 1-800-243-0533 during regular business hours for technical support.

[www.jaypro.com](http://www.jaypro.com)

Keep this instruction manual in case you have to contact the manufacturer for replacement parts.

**TOOLS AND MATERIALS REQUIRED FOR ASSEMBLY**  
(Not Included)

- |                          |   |
|--------------------------|---|
| 1) 2 Adjustable Wrenches | 9) Shovel   |
| 2) Socket Set            | 10) Concrete 1/2 yard or 14-16 Bags, (80 lbs. bags) |
| 3) 9/16" Wrench          | 11) Philips Head Screwdriver                        |
| 4) 3/4" Wrench           | 12) 2 Ladders (min.) or Crane                       |
| 5) 15/16" Wrench         | 13) Carpenter's Level                               |
| 6) 1/2" Wrench           | 14) Water Supply                                    |
| 7) Hammer or Mallet      |   |
| 8) Tape Measure          |   |

**\*\*A MINIMUM OF SIX ADULTS IS  
REQUIRED TO LIFT UNIT INTO PLACE\*\***

**STOP!**

**BEFORE YOU START**

**STOP!**

Identify and inventory all parts using the checklist boxes in the parts list.  
Be sure to keep the hardware bags and their contents separate.

Test fit all Bolts by inserting them into the respective hole. If necessary,  
carefully scrape away any excess powder coating buildup from inside the  
holes. Do not scrape away all of the powder coating. Bare metal may rust.

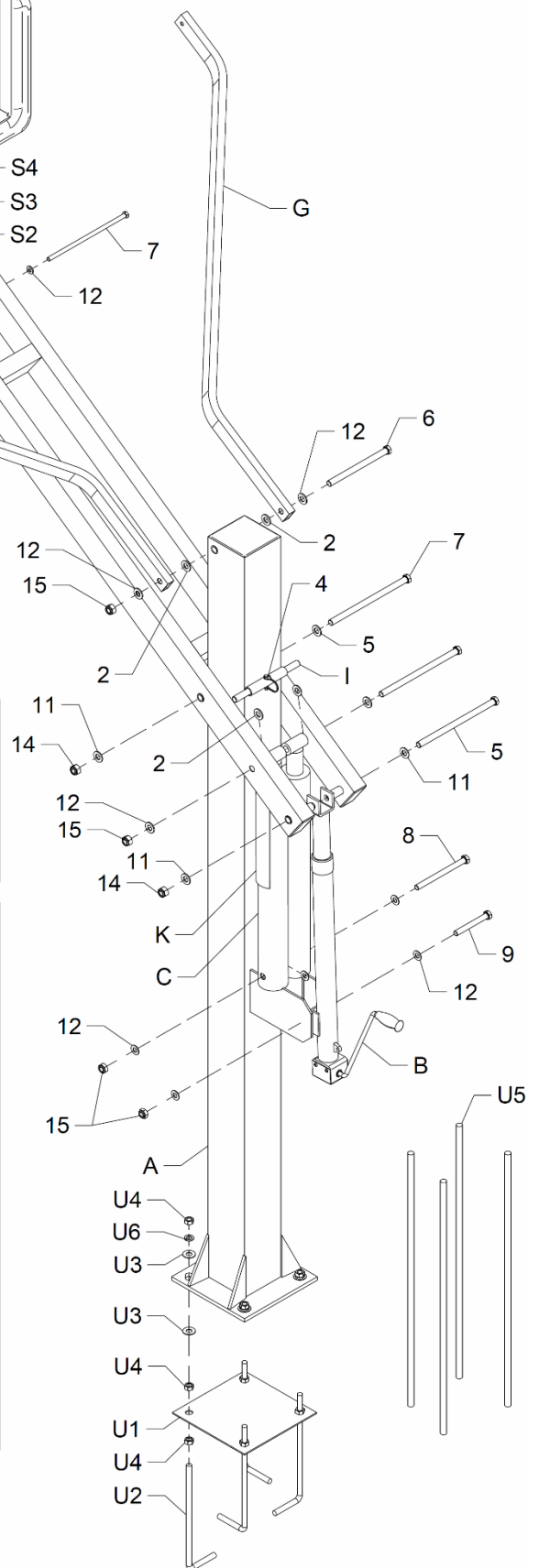


**SAFETY INSTRUCTIONS**



**FAILURE TO FOLLOW THESE SAFETY INSTRUCTIONS MAY RESULT IN SERIOUS INJURY OR  
PROPERTY DAMAGE AND WILL VOID THE WARRANTY.**

- A minimum of six adults are required to safely assemble the unit.
- The major components of this system have considerable weight. It is recommended that scaffolding and/or a lift jack be used to hoist the post, outrigger, braces and board into place.
- If using a ladder during assembly, use extreme caution. Follow all warnings and cautions on the ladder carefully.
- A probability of serious injury exists if this system is not installed, maintained, or operated properly.
- Before digging, contact the appropriate agency to locate underground power cables, gas, and water lines. Do not install the system within 20 feet of overhead power lines.
- Climate, corrosion, or misuse could result in system failure.
- If technical assistance is required, contact the manufacturer.
- Most injuries are caused by misuse and /or failure to follow instructions.
- Use caution when using the system.



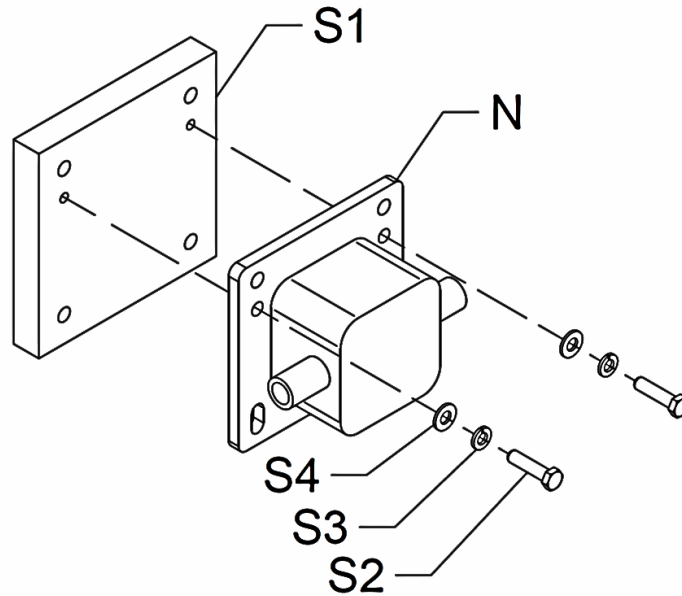
RIM HARDWARE		
ITEM	QTY	DESCRIPTION
R1	4	Carriage bolt M10x55mm
R2	4	Washer M10
R3	4	Flange nut M10
R4	4	Carriage bolt M10x110mm

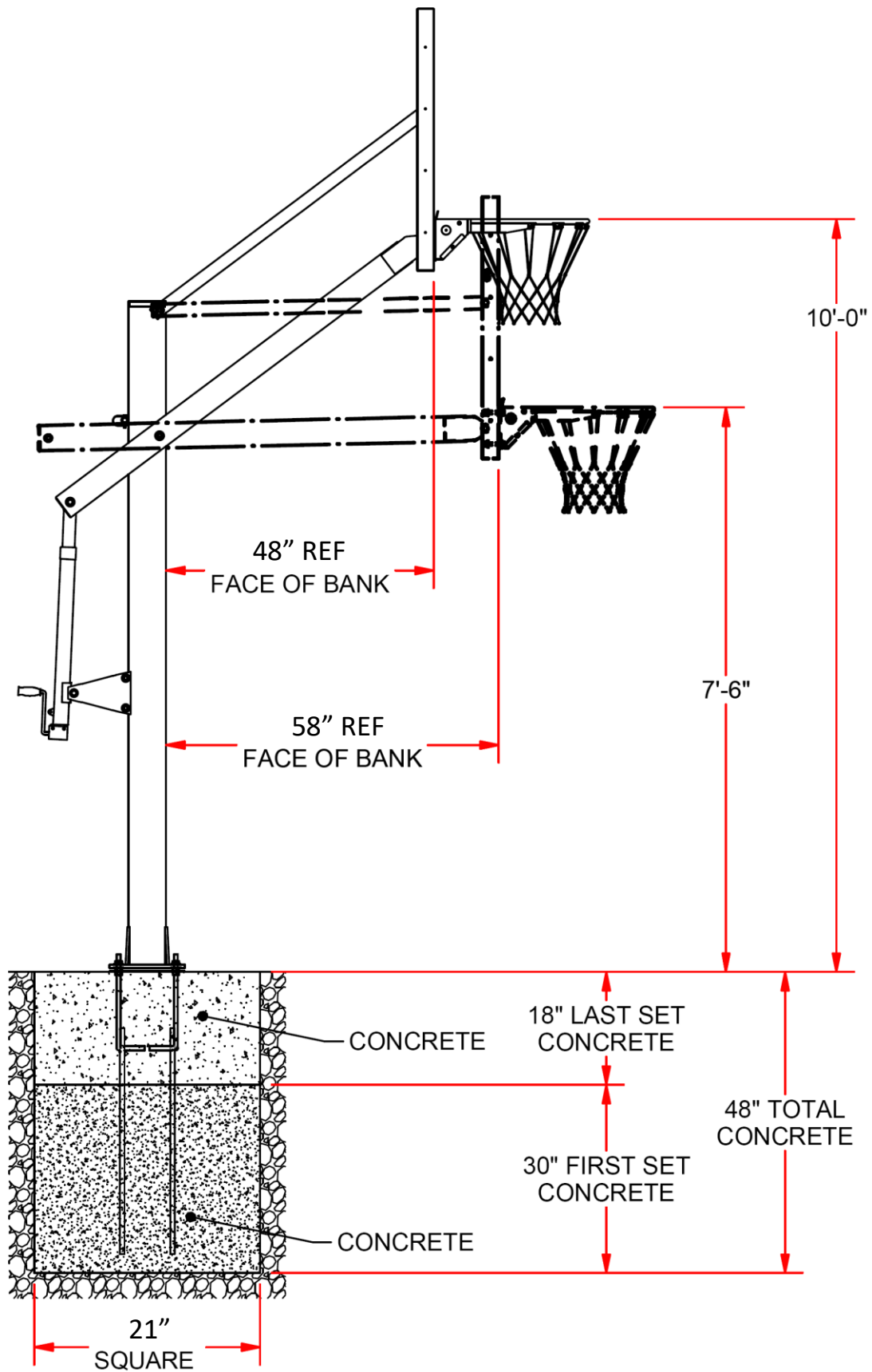
HARDWARE LIST		
ITEM	QTY	DESCRIPTION
1	2	Nylon Washer M18
2	9	Nylon Washer M16
3	2	Nylon Washer M12
4	1	6mm Lock Pin
5	2	Hex Bolt M18x320mm
6	1	Hex Bolt M16x295mm
7	2	Hex Bolt M16x320mm
8	1	Hex Bolt M16x185mm
9	1	Hex Bolt M16x135mm
10	2	Hex Bolt M12x70mm
11	4	Washer for M18 Bolt
12	10	Washer for M16 Bolt
13	4	Washer for M12 Bolt
14	2	Lock Nut M18
15	5	Lock Nut M16
16	2	Lock Nut M12

**Spacer Kit:**

- a. Attached the backboard mounting bracket (N) to the spacer backboard (S1) as shown, with 3/8" x 1 1/2" hex bolt (S2), lock washer 3/8" (S3) and washer 3/8" (S4).

***NOTE: spacer is only for 42" x 72" rectangular acrylic backboard (ACRB-72) only, discarded the other instructions.***





**INSTALLATION TIP / REFERENCE OVERALL VIEW**

### **Footing:**

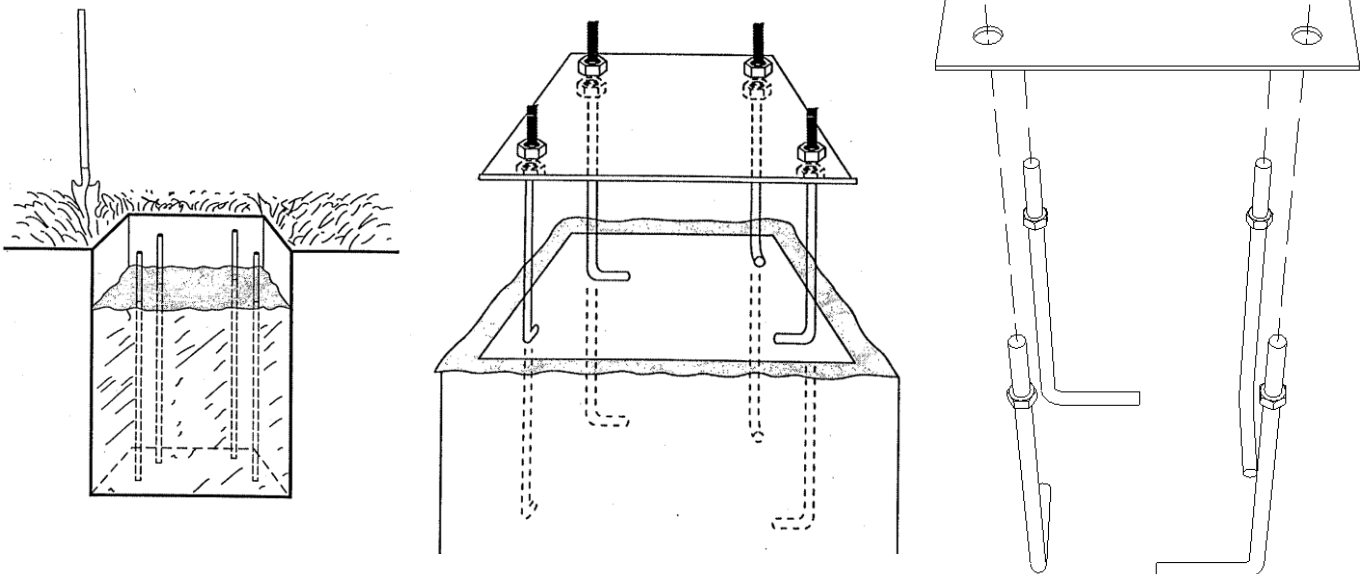
***NOTE: Before digging, call to locate any buried utility lines.***

- a. Dig a hole 48" deep x 21" across. The edge of the hole should be flush with the edge of the playing surface. If you live in an area where heavy frost can occur, it may pose a problem, consult your local building inspector to determine the appropriate hole depth.  
***NOTE: The hole must be at least 48" deep.***
- b. There must be at least 3 feet of clearance behind the unit to enable the user to adjust the height.
- c. Mix the concrete according to the instructions on the bags. Note that a thicker mix of concrete will dry stronger than a thin mix. Pour the concrete into the hole, stopping approximately 18 inches from the top of the hole.
- d. Assemble the ground anchor kit as shown below.
- e. Insert the four pieces of 1/2" x 36" rebar into the hole, pushing each piece firmly to the bottom of the hole. The four pieces should be arranged in a square approximately 8 - 9 inches wide so that each piece of rebar will be positioned surrounding the backstop post.
- f. Finish filling the hole to the top with concrete. And insert the ground anchor kit on top of the concrete.
- g. Allow the concrete to cure a minimum of 72 hours before proceeding. In humid climates or wet weather, allow additional time for the concrete to cure.

### **Ground Anchor Kit:**

Thread a M18 Hex Nut onto each of the J-Bolts. Securely tighten the Nuts all the way down to the end of the threads. Slide the threaded ends of the J-Bolts through the holes in the corners of the J-Bolt Template and secure them with M18 Hex Nuts as shown. Securely tighten all Nuts at this time.

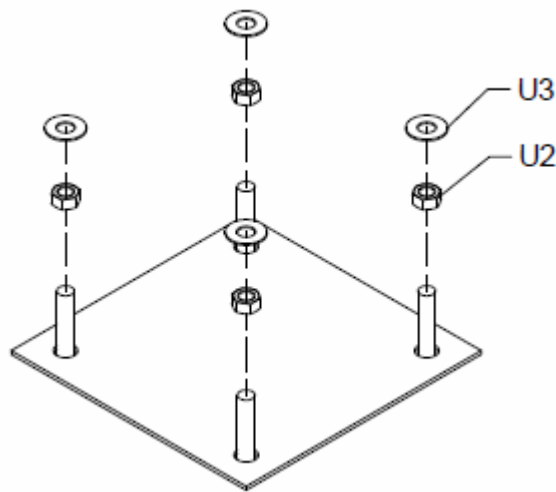
***NOTE: Make sure the curved "J" ends of the J-Bolts are oriented in a rectangular pattern as shown.***



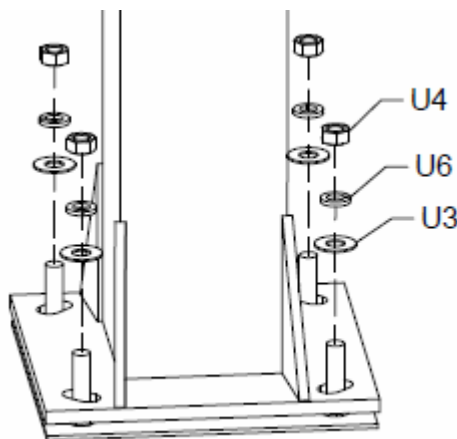
**Step 1:**

- a. Slide a 18mm thick washer (U3) over each of the J-Bolts (U2) as shown in FIGURE 1A.
- b. Remove the padding from main post (A). Place the main post (A) over the J-Bolts. Slide a 18mm thick washer (U3), a Lock washer 18mm (U6) and thread a 18mm hex nut (U4) to each J-Bolt. Tighten the nuts only a few turns onto the J-Bolts as shown in FIGURE 1B.
- c. If the main post (A) is not exactly vertical, adjust the 18mm J-Bolt hex nuts (U4) located under the post base. Tighten all of the hex nuts (U4) above post base when main post (A) is vertical.

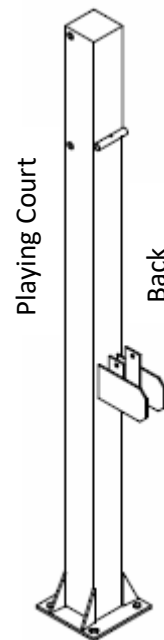
***NOTE: Face the main post (A) with actuator bracket facing away from playing court (as shown in FIGURE 1C).***



***FIGURE 1A***



***FIGURE 1B***

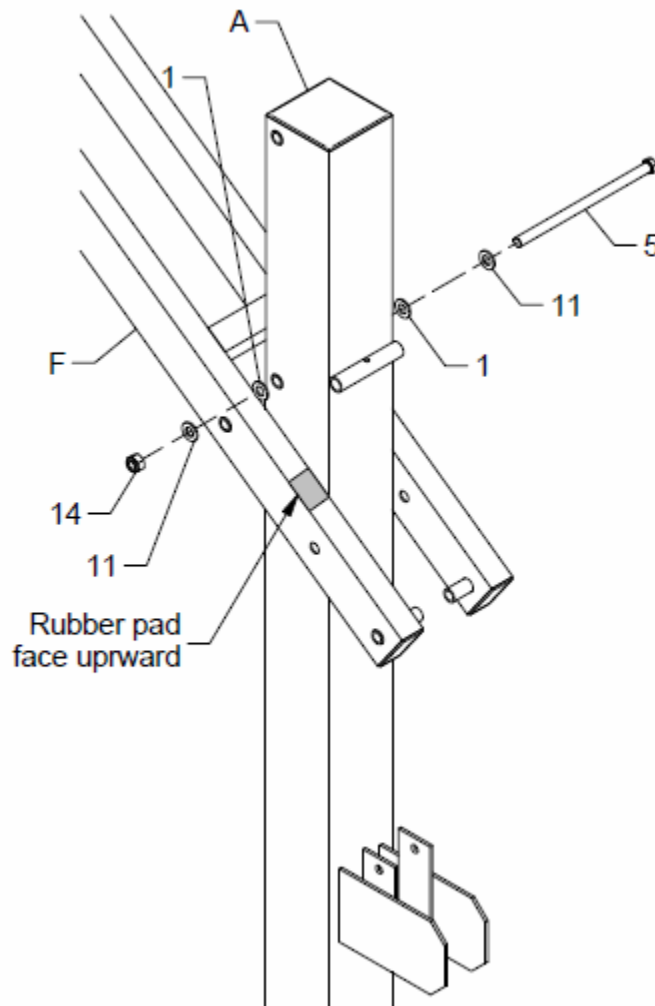


***FIGURE 1C***

**Step 2:**

- a. Slide the main extension arm (F) over the top of the main post (A) and attach to the lower pivot tube with a M18x320mm Hex Bolt (#5), two M18 flat washer (#11), two nylon washers M18 (#1) and one lock nut M18 (#14).

***NOTE: Make sure nylon washer located between main extension arm (F) and post (A). the nylon washers may be factory-assembled.***



***Nylon washer #1 may be factory installed.***

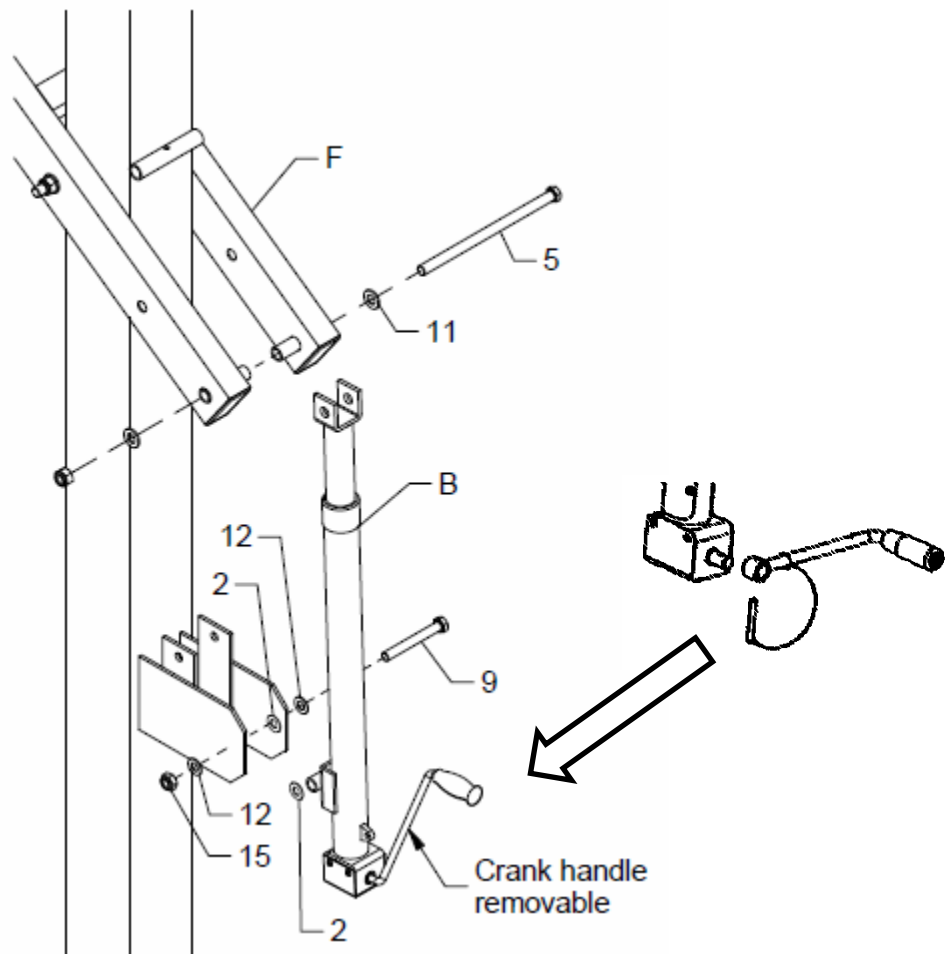


### **Step 3:**

- a. Connect actuator to main extension arm. Place the upper bracket of actuator (B) between the last set of welded tubes on the main extension arm (F), attach the two parts using hex bolt M18x320mm (#5), two flat washers M18 (#11), on lock nut (#14).
- b. Connect actuator (B) to the mounting bracket welded in the middle of post (A), using one hex bolt M16x135mm (#9), two flat washers for M16 bolt (#12), two nylon washers (#2), and one lock nut for M16 bolt (#15).

***NOTE: Make sure nylon washer go between actuator and mounting bracket.***

- c. Attached crank handle to the actuator. Slide removable crank handle onto the shaft sticking out of gear box (actuator), lock it in place with attached pin.



### Step 4:

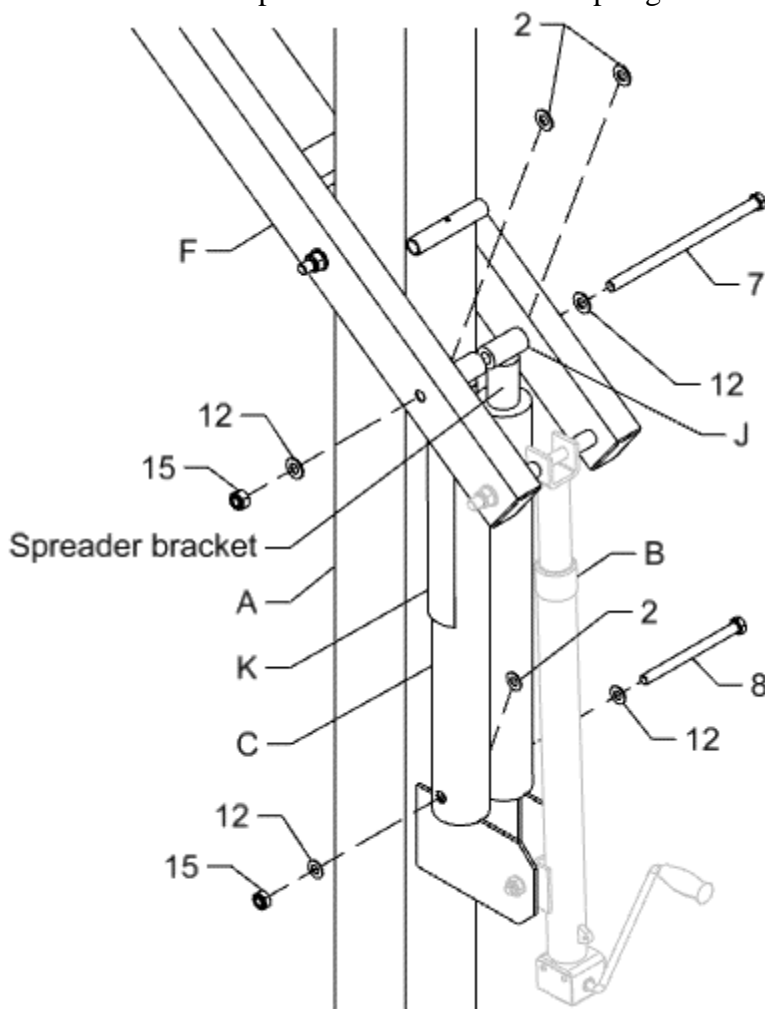
- a. Slide steel sleeve (J) thru both tubes welded at the top end of spring-assist cartridge (C). Place the top of spring-assist between main extension (F), align the steel sleeve (J) with the second set of welded tubes on the main extension arm (F), place the stainless-steel rim height indicator (K) beside the spring-assist cartridge (C). Slide one washer M16 (#12) over one hex bolt M16x320mm (#7) and slide this bolt all the way thru main extension arm (F), one nylon washer M16(#2), steel sleeve (J), rim height indicator (K), another nylon washer (#2), and the other side of main extension arm (F). secure it with one flat washer M16 (#12), one lock nut M16 (#15), Do not over tighten this bolt because this is the pivot point. Mack sure the rim height indicator (K) hang freely alongside of spring-assist cartridge (C).

**NOTE:** Nylon washer locates between steel sleeves (J) and main extension arm (F), they may be factory-assembled already.

- b. Attach the bottom of spring-assist cartridges (C) to the main post bracket by using a hex bolt M16x185mm (#8), two flat washers M16 (#12), one nylon washer M16 (#2) and one hex nut M16 (#15).

**NOTE: Nylon washer goes between two cartridges.**

- c. Remove and discard the steel spreader bracket from the spring-assist cartridges.

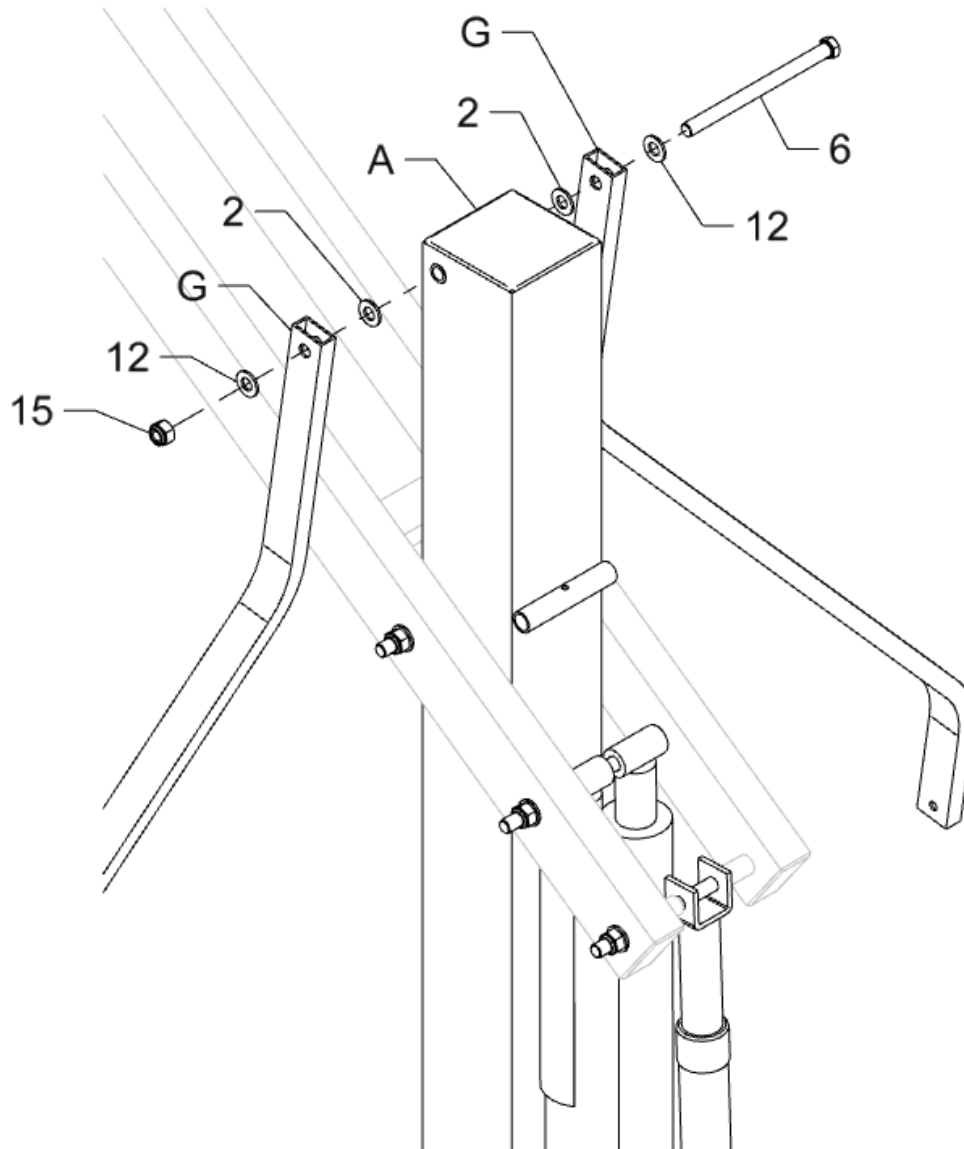


**Step 5:**

- a. Attached the two upper extension arms (G) to main post (A) with one hex bolt M16x295mm (#6), two flat washers M16 (#12), two nylon washers M16 (#2) and one lock nut M16 (#15).

***NOTE: The nylon washers go between upper extension arm and main post.***

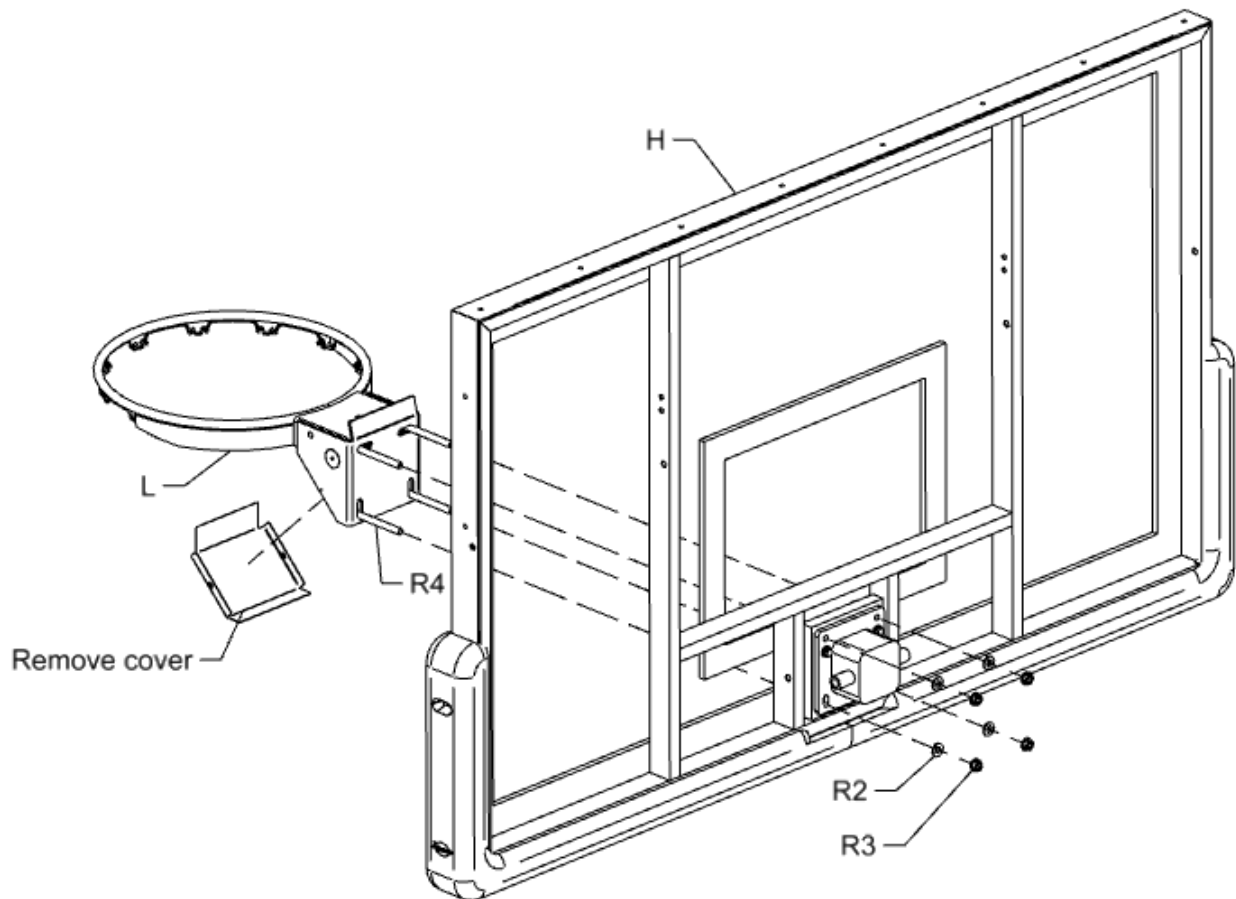
***Do not tighten at this time.***



### **Step 6:**

- b. Remove the screws on rim springs box cover, open the spring box. (rim spring box may not be factory-assembled.)
- c. Mount the rim to the mounting bracket on backboard (H) using the hardware supplied in rim box (carriage bolt M10x110mm Long one). Lift the backboard a little bit to align holes if needed.
- d. Re-attach spring box cover to the rim with removed screws.

***NOTE: Use a level to make sure rim is level side to side before tightening nuts***



**Step 7:**

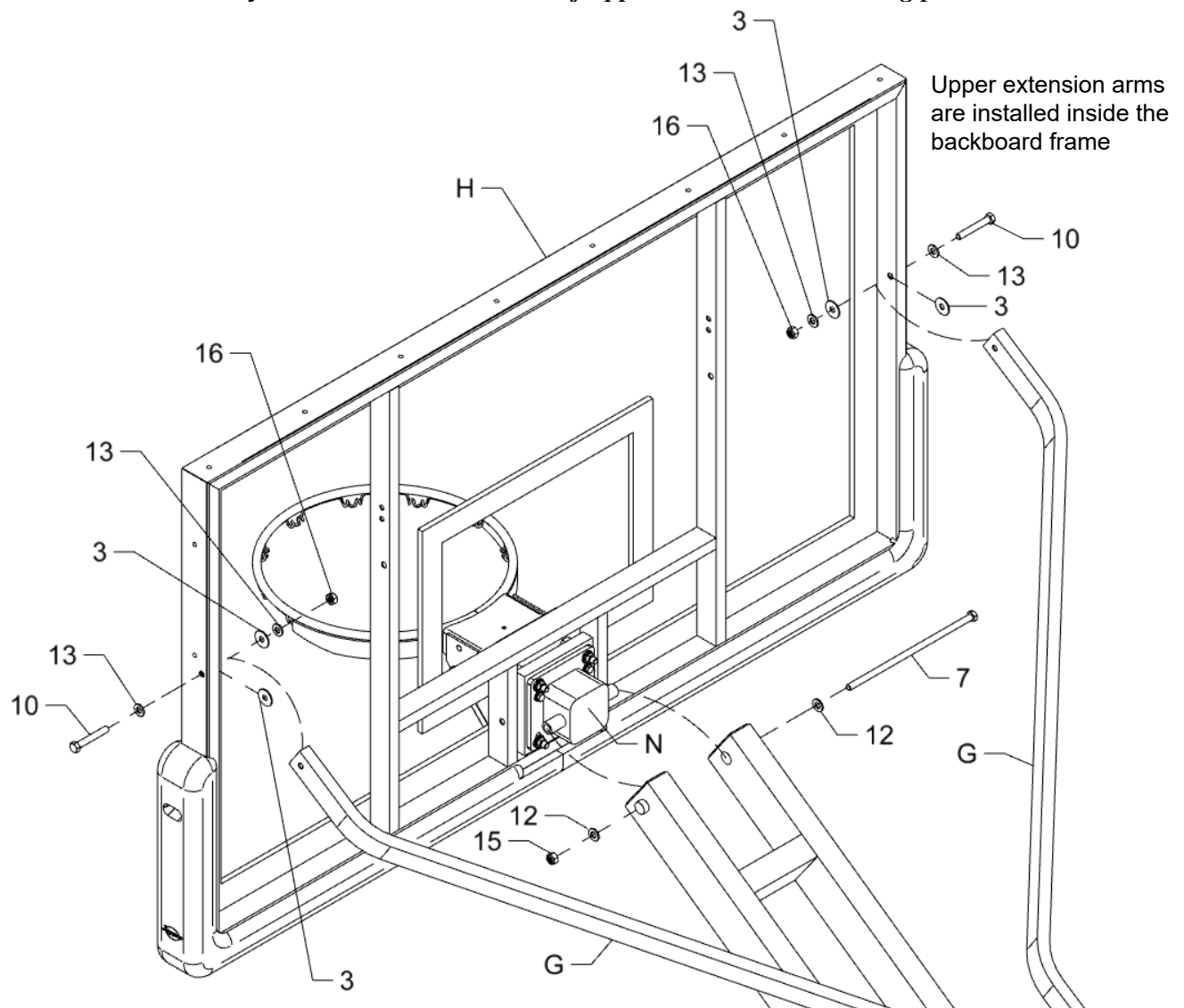
Crank the main extension arm as low as possible.

- a. Attached the backboard mounting bracket (n) to the main extension arm (F) by using a hex bolt M16x320mm (#7), two M16 flat washers (#12), two nylon washers (#2) and one lock nut M16 (#15).

***NOTE: Nylon washers go between main extension arm bracket (F) and backboard mounting bracket.***

- b. Connect upper extension arms (G) to backboard (H), using 2 hex bolts m12x70mm (#10), 4 flat washers M12 (#13), 4 Nylon washers M12 (#3) and 2 lock nut M12 (#16).

***NOTE: Put Nylon washers on both side of upper extension connecting plate.***



### **Step 8:**

- a. After everything is square, make sure all nuts on the system have been tightened.

***NOTE: Do not over tighten the nuts, make sure the unit can be adjusted up and down.***

- b. To apply the rim height sticker (in the manual pack), first use a tape measure to crank rim up to exactly 10' from the playing surface. Use a pencil to make a mark on the spring-assist cartridge (C) where the bottom of the rim height indicator (K) stops. Then peel and apply rim height sticker to outside of spring-assist cartridge (C) lining up the pencil mark with the 10' mark on the rim height sticker. See detail A.
- c. Attached past pad and gusset pad to main post (A) as shown.
- d. Slide safety rod (I) thru the tube welded on the back side of main post (A). align the holes each other and secure it with one lock pin 6mm (#4). See detail B.

